



NEYRA

SUPERIOR PAVEMENT PRODUCTS
AND SURFACING SOLUTIONS

PRODUCT CATALOG

VOL 5 | ISSUE 1

PAVEMENT SEALERS | ADDITIVES & PRIMERS | CRACK SEALANTS & PATCHING
SPORTS SURFACING | MARKING PAINT | TOOLS, SUPPLIES & EQUIPMENT

TABLE OF CONTENTS



About Neyra Industries..... 4-5

Pavement Sealers

Pavement Sealers..... 6-19

- Neyra AE - Asphalt Emulsion Pavement Sealer
- Neyra AE - Cool Weather Formula
- PaveShield - Asphalt Emulsion Pavement Sealer
- PaveShield - Cool Weather Formula
- Neyra Force - Petroleum Resin Pavement Sealer
- Neyra Force - Cool Weather Formula
- Tarconite - Coal Tar Pavement Sealer
- Tarconite - Cool Weather Formula
- Neyra PolyPro - Premium RTU Coal Tar Pavement Sealer
- Road Renew - Asphalt Emulsion Road Sealer
- Jennite - Premium Coal Tar Pavement Sealer
- Jennite AE - Premium Asphalt Emulsion Pavement Sealer
- SunShield - Solar Reflective Coating

Additives

Additives..... 20-25

- Armorflex - Epoxy Fortifier for Coal Tar Sealer
- Diamond Shield Fortifier
- Duraflex - Premium Polymer Fortifier for Asphalt Emulsion Sealer
- Maxum - Polymer Fortifier for Asphalt Emulsion Sealer
- Neyra QSA - Quick Set Additive for Coal Tar Sealer
- Poly+Plus - Latex Modifier for Coal Tar Sealer

Crack Fillers, Primers & Paint

Cold Applied Crack Fillers & Patching..... 26-30

- AcrylaSeal - Acrylic Pourable Crack Sealant
- FixMix - Quick Patch Binder
- Gatorfill - Trowelable Surface Mastic
- MicroMix - Trowelable Surface Mastic
- Plyolastic - Pourable Crack Filler

Crack Fillers, Primers & Paint

Crack/Joint Thermo-Sealants..... 31-33

- PLS - Crack/Joint Thermo-Sealant
- Spec+Plus - Crack/Joint Thermo-Sealant
- Thermoflex - Crack/Joint Thermo-Sealant

Primers & Paint..... 34-39

- Asphalt-Tac - Tack Coat
- Petrobond - Oil Spot Primer
- Polyprime - Penetrating Pavement Primer
- Polyprime RPA - Rust Preventative Pavement Primer
- LockDown
- Franklin Paint

Sports Surfacing

Dynaflex Sports Surfacing System..... 40-59

- Dynaflex Acrylic Resurfacer
- DynaSurf - Flexible Acrylic Resurfacer
- DynaColor - Acrylic Color Coating
- Center Court - Textured Coating
- PicklePlay - Textured Coating
- DynaCushion Base Mat - Acrylic Polymer Emulsion
- DynaCushion Top Mat - Acrylic Polymer Emulsion
- Dynabinder - Patch Binder
- CRA - Crack Repair Adhesive
- Dynaprime - Concrete Primer
- Polyprime RPA - Rust Preventative
- Dynacaulk - Crack Filler
- AcrylaSeal - Acrylic Pourable Crack Sealant
- Dynastripe - Line Tape
- Stripe Aid - Line Striping Tape Gap Filler
- Dynatrac - Running Track Surface Binder
- Dynathane - Running Track Surface Binder
- Dynaflex RPA - Rust Preventative Additive

Tools, Supplies & Equipment

Tools, Supplies & Equipment..... 60-73

With over 50 years of experience and innovation, Neyra is the most trusted name in the pavement maintenance industry. A family-owned company constructed on a foundation of quality and integrity, Neyra is more than just a manufacturer of superior paving products and surfacing solutions — WE ARE your business partner.

EXPERIENCE THE NEYRA DIFFERENCE

Through a mission to inspire people and have a positive impact on the organizations we serve, Neyra invests in the best people, customers and technology. We are committed to the growth and development of our customers while continuing a tradition built on quality assurance, performance consistency and exceptional service.

THIS IS THE NEYRA DIFFERENCE.

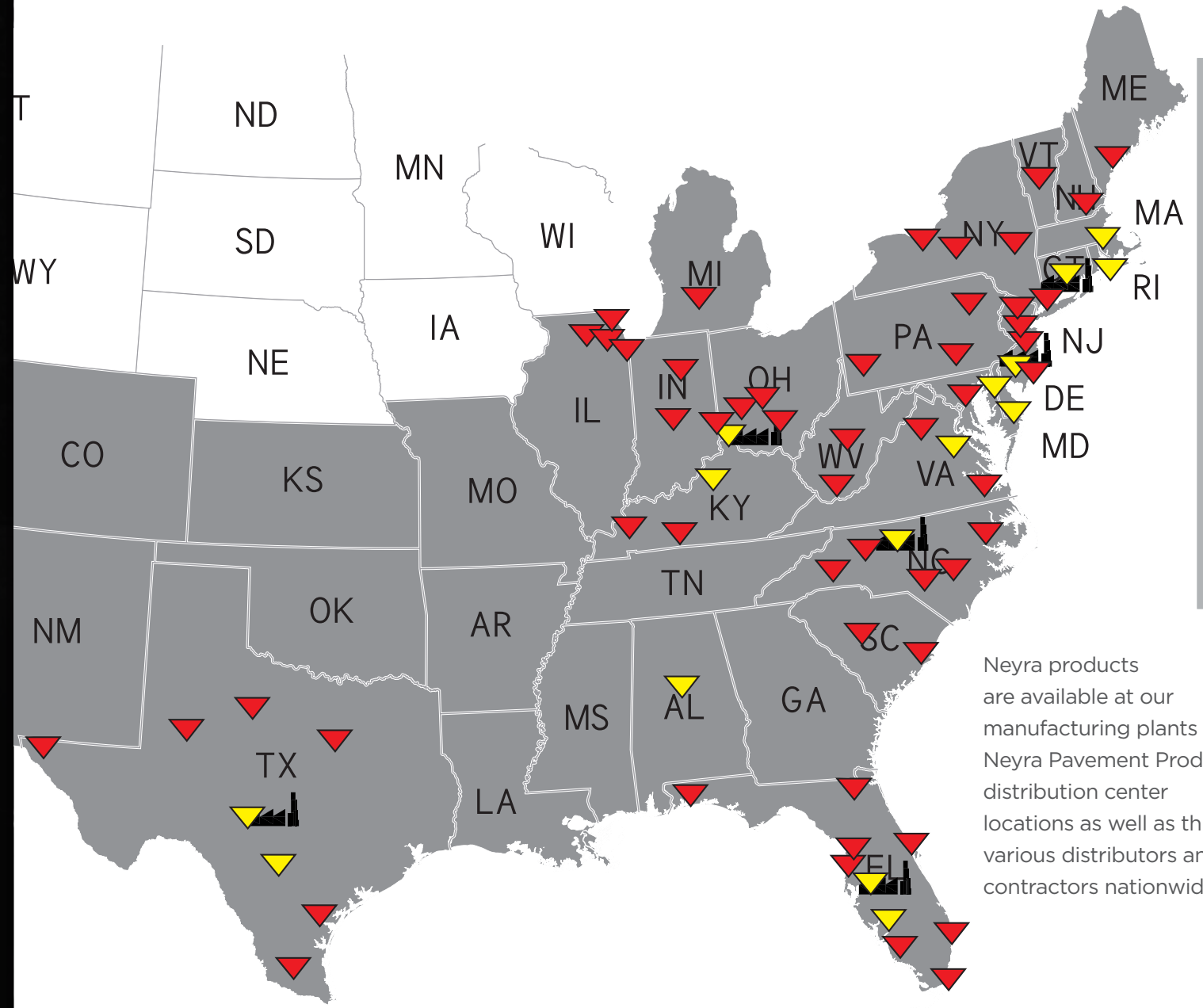
NEYRA



CONTACT US

800.543.7077 | www.neyra.com | customerservice@neyra.com

FOLLOW US



Neyra products are available at our manufacturing plants and Neyra Pavement Products distribution center locations as well as through various distributors and contractors nationwide.

FOR A COMPLETE LIST OF DISTRIBUTION CENTER LOCATIONS THAT OFFER NEYRA PRODUCTS, PLEASE VISIT WWW.NEYRA.COM.

- | | | | |
|---|--|--|--|
| CINCINNATI, OH
Neyra Corporate Headquarters
10700 Evendale Drive
Cincinnati, OH 45241
800.543.7077 | HUTTO, TX
200 Ironhorse Drive
Hutto, TX 78634
512.244.9423 | NEW CASTLE, DE
867 S. DuPont Highway
New Castle, DE 19720
302.312.3160 | SAN ANTONIO, TX
4437 Fredericksburg Road
Balcones Heights, TX 78201
210.635.0059 |
| APOPKA, FL
940 S. Highland Avenue
Apopka, FL 32703
407.889.0808 | JOHNSTON, RI
111 Railroad Avenue, #9
Johnston, RI 02919
401.233.3200 | NEWFIELD, NJ
14 Rena Street
Newfield, NJ 08344
856.697.0010 | SOUTH WINDSOR, CT
239 Sullivan Avenue
South Windsor, CT 06074
860.289.4359 |
| GEORGETOWN, DE
19032 Firewalker Lane
Georgetown, DE 19947
302.515.1181 | LOUISVILLE, KY
1405 Hugh Avenue
Louisville, KY 40213
502.974.5292 | PLANT CITY, FL
3404 US Highway 92 East
Unit B
Plant City, FL 33566
813.704.6907 | SOUTH WINDSOR, CT
520 Burnham Street
South Windsor, CT 06074
860.290.9400 |
| GRAHAM, NC
931 E Elm Street
Graham, NC 27253
336.350.9718 | MILLBURY
260 Millbury Avenue
Millbury, MA 01527
774.420.7530 | RICHMOND, VA
711 Dawn Street, Suite B
Richmond, VA 23222
804.329.7325 | TRENTON, NJ
27 Industrial Drive
Trenton, NJ 08619
609.586.4200 |

PLANT LOCATION NEYRA PAVEMENT PRODUCTS DISTRIBUTION CENTERS ADDITIONAL DISTRIBUTION CENTERS OFFERING NEYRA PRODUCTS COVERAGE AREA

NEYRA AE

Asphalt Emulsion Pavement Sealer

Neyra AE is an environmentally friendly asphalt emulsion pavement sealer containing high molecular weight polymers, mineral fillers. Neyra AE is modified with specialized surfactants that is formulated as a weather protective, water resistant coating for asphalt surfaces.

ENVIRONMENTALLY FRIENDLY

Neyra AE is a low VOC, non-flammable coating that contains no coal tar to irritate skin or emit coal tar odors.

APPROVED FOR USE IN BANNED AREAS - LOW PAH CONTENT

Contains less than 0.1% Polycyclic Aromatic Hydrocarbon (PAH) content. Approved for use in areas banning high PAH and coal tar sealers.

FAST DRYING AND CURING

Higher solids, polymer modified asphalt emulsion allows for a faster cure, opening to traffic faster.

PROTECTS & BEAUTIFIES

Neyra AE forms a tight seal that is impenetrable to the destructive effects of sun, water and chemicals giving your pavement a deep black long lasting color.

TOUGH & DURABLE

Neyra AE is a polymer modified, mineral reinforced asphalt emulsion blended with emulsifiers and surfactants for superior durability, adhesion and flexibility.

ADDITIVE

Maxum is recommended with the use of Neyra AE asphalt emulsion pavement sealer.

AVAILABLE IN DRUM OR BULK

#11024 - 55-Gallon Steel Drum

#11025 - Bulk Pricing Available Upon Request



Mix Design (Based on 100 Gallons)

Neyra AE is a highly concentrated material intended to be mixed with water and mineral aggregate to form a ready-to-use pavement sealer. DO NOT over dilute.

WATER	SAND	YIELD
15 - 20 Gallons	300 - 500 lbs.	119 - 133 Gallons

All sand used should be clean, dry, pure silica and free of contaminants. Medium fine sand with an A.F.S. rating of 50 to 70 gives best results. There should be no more than 2% retained on 30 mesh or coarser, no more than 10% retained on 140 mesh and no more than 0.3% retained on 200 mesh.

Use only Neyra additives specifically designed for Neyra AE. Do not use other additives. They are not chemically compatible with Neyra AE and will degrade the emulsion.

Application

For use over sound asphalt pavement, the following application procedures are recommended for best results:

	GALLONS/ SQ. YARD	GALLONS/ SQ. FOOT
Concentrate	.10	.011
Mix	.13 - .15	.014 - .016



Mix Design (Based on 100 Gallons)

Neyra AE Cool Weather Formula is a highly concentrated material intended to be mixed with water and mineral aggregate to form a ready-to-use pavement sealer. DO NOT over dilute.

WATER	SAND	YIELD
15 - 20 Gallons	300 - 500 lbs.	119 - 133 Gallons

All sand used should be clean, dry, pure silica and free of contaminants. Medium fine sand with an A.F.S. rating of 50 to 70 gives best results. There should be no more than 2% retained on 30 mesh or coarser, no more than 10% retained on 140 mesh and no more than 0.3% retained on 200 mesh.

Use only Neyra additives specifically designed for Neyra AE CWF. Do not use other additives. They are not chemically compatible with Neyra AE CWF and will degrade the emulsion.

Application

For use over sound asphalt pavement, the following application procedures are recommended for best results:

	GALLONS/ SQ. YARD	GALLONS/ SQ. FOOT
Concentrate	.10	.011
Mix	.13 - .15	.014 - .016



Cool Weather Formula

NEYRA AE

Cool Weather Formula

Neyra AE Cool Weather Formula (CWF) looks and performs just like the Neyra AE pavement sealer but is engineered to replace the energy that the sun provides during warmer weather to help cure the coating. It has the same mix design and viscosity and is stable in a storage tank.

This sealer forms a film at temperatures as low as 40°F.

ENVIRONMENTALLY FRIENDLY

Neyra AE CWF is a low VOC, non-flammable coating that contains no coal tar to irritate skin or emit coal tar odors.

APPROVED FOR USE IN BANNED AREAS - LOW PAH CONTENT

Contains less than 0.1% Polycyclic Aromatic Hydrocarbon (PAH) content. Approved for use in areas banning high PAH and coal tar Sealers.

PROTECTS & BEAUTIFIES

Neyra AE CWF forms a tight seal that is impenetrable to the destructive effects of sun, water and chemicals giving your pavement a deep black long lasting color.

TOUGH & DURABLE

Neyra AE CWF is a polymer modified, mineral reinforced asphalt emulsion blended with emulsifiers and surfactants for superior durability, adhesion and flexibility.

ADDITIVE

Neyra AE Cool Weather Formula is not a fast dry additive. Since the weather is cool, curing will be a slow process. Just like Neyra AE, follow the same guidelines and mix design for adding Maxum to your mix to enhance dry time.

AVAILABLE IN BULK

#11028 - Bulk Pricing Available Upon Request

PAVESHIELD

Asphalt Emulsion Pavement Sealer

PaveShield is a polypetrol resin emulsion specifically formulated as a weather protective, water resistant coating for all asphalt surfaces. PaveShield extends the service life and reduces maintenance costs of asphalt pavements, protecting them from the destructive effects of water, sunlight and oxidation. When mixed and applied according to manufacturer's recommendations, PaveShield provides a new-looking, long-lasting surface that is easy to clean.

TOUGH & DURABLE

The proprietary high molecular weight polypetrol resin in PaveShield, creates tough and long lasting protection.

PROTECT & BEAUTIFY

A tight seal forms an impenetrable barrier to protect against the destructive effects of sun, water and chemicals, giving pavement a deep black color.

SUPERIOR BOND

When chemically reinforced with Duraflex, PaveShield enhances the adhesion to the asphalt pavement and rejuvenates the surface preventing raveling.

ENVIRONMENTALLY FRIENDLY

A low VOC, non-flammable coating that emits no obnoxious odors or fumes and contains no coal tar to irritate skin. PaveShield does not track or stain tile floors. Approved for use in areas banning high PAH and coal tar Sealers.

ADDITIVE

Duraflex and Maxum are recommended with the use of PaveShield asphalt emulsion pavement sealer.

AVAILABLE IN DRUM OR BULK

#01011 - 55-Gallon Steel Drum

#01010 - Bulk Pricing Available Upon Request



Mix Design (Based on 100 Gallons)

PaveShield is a highly concentrated material intended to be mixed with water and mineral aggregate to form a ready-to-use pavement sealer. DO NOT over dilute.

WATER	SAND	YIELD
20 - 25 Gallons	300 - 500 lbs.	133 - 147 Gallons

All sand used should be clean, dry, pure silica and free of contaminants. Medium fine sand with an A.F.S. rating of 50 to 70 gives best results. There should be no more than 2% retained on 30 mesh or coarser, no more than 10% retained on 140 mesh and no more than 0.3% retained on 200 mesh.

Use only Neyra additives specifically designed for PaveShield. Do NOT use other additives, since they are not chemically compatible with PaveShield and will degrade emulsion.

Application

For use over sound asphalt pavement, the following application procedures are recommended for best results:

	GALLONS/ SQ. YARD	GALLONS/ SQ. FOOT
Concentrate	.10	.011
Mix	.13 - .15	.014 - .016

PaveShield

Mix Design (Based on 100 Gallons)

PaveShield Cool Weather Formula is a highly concentrated material intended to be mixed with water and mineral aggregate to form a ready-to-use pavement sealer. DO NOT over dilute.

WATER	SAND	YIELD
20 - 25 Gallons	300 - 500 lbs.	133 - 147 Gallons

All sand used should be clean, dry, pure silica and free of contaminants. Medium fine sand with an A.F.S. rating of 50 to 70 gives best results. There should be no more than 2% retained on 30 mesh or coarser, no more than 10% retained on 140 mesh and no more than 0.3% retained on 200 mesh.

Use only Neyra additives specifically designed for PaveShield CWF. Do NOT use other additives, since they are not chemically compatible with PaveShield CWF and will degrade emulsion.

Application

For use over sound asphalt pavement, the following application procedures are recommended for best results:

	GALLONS/ SQ. YARD	GALLONS/ SQ. FOOT
Concentrate	.10	.011
Mix	.13 - .15	.014 - .016

PaveShield

Cool Weather Formula

PAVESHIELD

Cool Weather Formula

PaveShield Cool Weather Formula (CWF) looks and performs just like PaveShield but is engineered to replace the energy that the sun provides during warmer weather to help cure the coating. It has the same mix design and viscosity and is stable in a storage tank.

This sealer forms a film at temperatures as low as 40°F.

TOUGH & DURABLE

The proprietary high molecular weight polypetrol resin in PaveShield CWF, creates tough and long lasting protection.

PROTECT & BEAUTIFY

A tight seal forms an impenetrable barrier to protect against the destructive effects of sun, water and chemicals, giving pavement a deep black color.

SUPERIOR BOND

When chemically reinforced with Duraflex, PaveShield CWF enhances the adhesion to the asphalt pavement and rejuvenates the surface preventing raveling.

ENVIRONMENTALLY FRIENDLY

A low VOC, non-flammable coating that emits no obnoxious odors or fumes and contains no coal tar to irritate skin. PaveShield CWF does not track or stain tile floors. Approved for use in areas banning high PAH and coal tar Sealers.

ADDITIVE

PaveShield Cool Weather Formula is not a fast dry additive. Since the weather is cool, curing will be a slow process. Just like PaveShield, follow the same guidelines and mix design for adding Maxum or Duraflex to your mix to enhance dry time.

AVAILABLE IN BULK

#01015 - Bulk Pricing Available Upon Request

NEYRA FORCE

Petroleum Resin Pavement Sealer

Neyra Force is a water-based, petroleum resin sealer that outperforms traditional pavement sealers. While providing benefits of a coal-tar sealer, Neyra Force is environmentally friendly and safe for your employees to apply.

A PREMIUM ALTERNATIVE

Neyra Force is a high performance alternative to both coal tar and asphalt emulsion sealers providing exceptional coverage, durability and color stability.

DURABLE & LONG LASTING

Proprietary engineered resin is formulated to create tough and long-lasting protection.

PROTECTS & BEAUTIFIES

A tight seal forms an impenetrable barrier to protect against the destructive effects of sun, water and chemicals, giving pavement a deep black color.

PREVENTS OXIDATION

Blocks out the damaging effects of the sun.

GAS & OIL RESISTANT

Resists damage caused by gasoline, oil, jet fuel leaks and spills.

ENVIRONMENTALLY FRIENDLY

A low VOC, non-flammable coating that contains NO coal tar.

ADDITIVE

Diamond Shield is recommended with the use of Neyra Force petroleum resin pavement sealer.

AVAILABLE IN DRUM OR BULK

#11010 - 55-Gallon Steel Drum

#11011 - Bulk Pricing Available Upon Request



Mix Design (Based on 100 Gallons)

Neyra Force is a highly concentrated material intended to be mixed with water and mineral aggregate to form a ready-to-use sealer. DO NOT over dilute.

WATER	SAND	YIELD
30 Gallons	300 - 500 lbs.	144 - 153 Gallons

All sand used should be clean, dry, pure silica and free of contaminants. Medium fine sand with an A.F.S. rating of 50 to 70 gives best results. There should be no more than 2% retained on 30 mesh or coarser, no more than 10% retained on 140 mesh and no more than 0.3% retained on 200 mesh.

Use only Neyra additives specifically designed for Neyra Force. Do NOT use other additives, since they are not chemically compatible with Neyra Force.

Application

For use over sound asphalt pavement, the following application procedures are recommended for best results:

	GALLONS/ SQ. YARD	GALLONS/ SQ. FOOT
Concentrate	.10	.011
Mix	.13 - .15	.014 - .016



Mix Design (Based on 100 Gallons)

Neyra Force Cool Weather Formula is a highly concentrated material intended to be mixed with water and mineral aggregate to form a ready-to-use sealer. DO NOT over dilute.

WATER	SAND	YIELD
30 Gallons	300 - 500 lbs.	144 - 153 Gallons

All sand used should be clean, dry, pure silica and free of contaminants. Medium fine sand with an A.F.S. rating of 50 to 70 gives best results. There should be no more than 2% retained on 30 mesh or coarser, no more than 10% retained on 140 mesh and no more than 0.3% retained on 200 mesh.

Use only Neyra additives specifically designed for Neyra Force CWF. Do NOT use other additives, since they are not chemically compatible with Neyra Force CWF.

Application

For use over sound asphalt pavement, the following application procedures are recommended for best results:

	GALLONS/ SQ. YARD	GALLONS/ SQ. FOOT
Concentrate	.10	.011
Mix	.13 - .15	.014 - .016



NEYRA FORCE

Cool Weather Formula

Neyra Force Cool Weather Formula (CWF) looks and performs just like the Neyra Force pavement sealer but is engineered to replace the energy that the sun provides during warmer weather to help cure the coating. It has the same mix design and viscosity and is stable in a storage tank.

This sealer forms a film at temperatures as low as 40°F.

DURABLE & LONG LASTING

Proprietary engineered resin is formulated to create tough and long lasting protection.

PROTECT & BEAUTIFIES

A tight seal forms an impenetrable barrier to protect against the destructive effects of sun, water and chemicals, giving pavement a deep black color.

PREVENTS OXIDATION

Blocks out the damaging effects of the sun.

GAS & OIL RESISTANT

Resists damage caused by gasoline, oil, jet fuel leaks and spills.

ENVIRONMENTALLY FRIENDLY

A low VOC, non-flammable coating that contains NO coal tar.

ADDITIVE

Neyra Force Cool Weather Formula is not a fast dry additive. Since the weather is cool, curing will be a slow process. Just like Neyra Force, follow the same guidelines and mix design for adding Diamond Shield to your mix to enhance dry time.

AVAILABLE IN BULK

#11013 - Bulk Pricing Available Upon Request

TARCONITE

Coal Tar Pavement Sealer

Tarconite is a concentrated refined coal tar emulsion specifically formulated as a weather protective, gas and oil resistant coating to be used over asphalt pavements of airports, parking lots and driveways.

PREVENTS OXIDATION

Shields against the drying action of the sun. Reduces raveling, cracking and deterioration.

JET BLACK COLOR

Restores that clean, new, black look.

HIGHLY RESISTANT

Resists gasoline, oils, acids and jet fuel.

FORTIFIED FORMULA

Modified with ingredients that give it superior water resistance and significantly improve its adhesion to pavement.

ADDITIVE

Armorflex or Neyra QSA additives are recommended with the use of Tarconite coal tar pavement sealer.

AVAILABLE IN DRUM OR BULK

#01103 - 55-Gallon Steel Drum

#01001 - Bulk Pricing Available Upon Request



Mix Design (Based on 100 Gallons)

Tarconite is a highly concentrated material intended to be mixed with water and mineral aggregate to form a ready-to-use pavement sealer. DO NOT over dilute.

WATER	SAND	YIELD
25 - 35 Gallons	300 - 500 lbs.	138 - 157 Gallons

All sand used should be clean, dry, pure silica and free of contaminants. Medium fine sand with an A.F.S. rating of 50 to 70 gives best results. There should be no more than 2% retained on 30 mesh or coarser, no more than 10% retained on 140 mesh and no more than 0.3% retained on 200 mesh.

Use only Neyra additives specifically designed for Tarconite. Do NOT use other additives, since they are not chemically compatible with Tarconite.

Application

For use over sound asphalt pavement, the following application procedures are recommended for best results:

	GALLONS/ SQ. YARD	GALLONS/ SQ. FOOT
Concentrate	.09	.01
Mix	.14 - .17	.015 - .019



Mix Design (Based on 100 Gallons)

Tarconite Cool Weather Formula is intended to be mixed with water and mineral aggregate to form a ready-to-use pavement sealer in temperatures as low as 40°F. DO NOT over dilute.

WATER	SAND	YIELD
25 - 35 Gallons	300 - 500 lbs.	138 - 157 Gallons

All sand used should be clean, dry, pure silica and free of contaminants. Medium fine sand with an A.F.S. rating of 50 to 70 gives best results. There should be no more than 2% retained on 30 mesh or coarser, no more than 10% retained on 140 mesh and no more than 0.3% retained on 200 mesh.

Use only Neyra additives specifically designed for Tarconite CWF. Do NOT use other additives, since they are not chemically compatible with Tarconite CWF.

Application

For use over sound asphalt pavement, the following application procedures are recommended for best results:

	GALLONS/ SQ. YARD	GALLONS/ SQ. FOOT
Concentrate	.09	.01
Mix	.14 - .17	.015 - .019



TARCONITE

Cool Weather Formula

Tarconite Cool Weather Formula (CWF) looks and performs just like Tarconite but is engineered to replace the energy that the sun provides during warmer weather to help cure the coating. It has the same mixed design as Tarconite and has the same viscosity. Tarconite CWF is also stable in a storage tank.

This sealer forms a film at temperatures as low as 40°F.

PREVENTS OXIDATION

Shields against the drying action of the sun. Reduces raveling, cracking and deterioration.

JET BLACK COLOR

Restores that clean, new, black look..

HIGHLY RESISTANT

Resists gasoline, oils, acids and jet fuel.

FORTIFIED FORMULA

Modified with ingredients that give it superior water resistance and significantly improve its adhesion to pavement.

ADDITIVE

Tarconite Cool Weather Formula is not a fast dry additive. Since the weather is cool, curing will be a slow process. To enhance dry time, follow the same guidelines and mix design for adding Armorflex or Neyra QSA to a Tarconite mix.

AVAILABLE IN BULK

#01014 - Bulk Pricing Available Upon Request

NEYRA POLYPRO

Premium RTU Coal Tar Pavement Sealer

Neyra PolyPro is a premium quality pavement coating composed of refined coal tar that is fortified with rubber prior to emulsification. In addition, Neyra PolyPro contains a unique surfactant formulation which allows greater compatibility with asphalt surfaces.

ULTIMATE PROTECTION

The high solids, polymer modified formula provides increased resistance to oil, gasoline and chemicals.

MAXIMUM DURABILITY

You can expect up to three times the wear of other pavement coatings.

EASY TO USE

Neyra PolyPro comes in a ready-to-use formula.

SAFER & EASIER TO CLEAN

Neyra PolyPro creates a seamless, skid-resistant and even-textured surface.

RICH, BLACK "BRAND NEW" LOOK

PolyPro's tough, tight, waterproof seal is the longest lasting pavement coating.

AVAILABLE IN DRUM OR BULK

#01027 - 55-Gallon Steel Drum

#01008 - Bulk Pricing Available Upon Request



Mix Design (Based on 100 Gallons)

Neyra PolyPro is designed to be mixed with mineral aggregate to create a ready-to-use pavement coating. Minimal dilution with water may be required for workability. DO NOT over dilute.

WATER	SAND	YIELD
25 - 35 Gallons	500 - 600 lbs.	152 - 157 Gallons

All sand used should be clean, dry, pure silica and free of contaminants. Medium fine sand with an A.F.S. rating of 50 to 70 gives best results. There should be no more than 2% retained on 30 mesh or coarser, no more than 10% retained on 140 mesh and no more than 0.3% retained on 200 mesh.

Application

For use over sound asphalt pavement, the following application procedures are recommended for best results:

	GALLONS/ SQ. YARD	GALLONS/ SQ. FOOT
Concentrate	.10	.011
Mix	.15 - .16	.016 - .017
Primer	.015	.0016

One gallon will cover 90 square feet. Multiply square yards of surface x 0.1 to determine gallons of concentrate per coat.



Mix Design (Based on 100 Gallons)

Road Renew is intended to be mixed with water and mineral aggregate to form a ready-to-use pavement sealer. DO NOT over dilute.

WATER	20-30 MESH SAND	YIELD
20 - 25 Gallons	600 lbs.	147 - 152 Gallons

Application

For use over sound asphalt pavement, the following application procedures are recommended for best results:

	GALLONS/ SQ. YARD	GALLONS/ SQ. FOOT
Concentrate	.10	.011
Mix	.15 - .16	.016 - .017
Primer	.015	.0016



ROAD RENEW

Asphalt Emulsion Road Sealer

Road Renew is a concentrated, polymer modified petroleum resin emulsion specifically formulated as a weather protective, water resistant coating over asphalt pavements.

Road Renew extends the service life and reduces maintenance costs of asphalt pavements. Road Renew protects such pavements from the destructive effects of water, sunlight and oxidation. Road Renew, when mixed and applied according to manufacturers recommendations, provides a distinctive new-looking surface that is skid resistant, long lasting and easy to clean.

ADVANCED FORMULA

Road Renew is extremely durable due to its polymer fortified resin and fiber reinforced, high solids formula.

PREVENTS OXIDATION

Road Renew protects against the drying action of the sun - reducing raveling, cracking and deterioration.

LUSTROUS BLACK FINISH

Road Renew restores that clean, new look.

COMPATIBILITY

Road Renew is made from an asphalt resin binder which is more compatible with new asphalt pavement. Does not promote hairline cracking.

NO BURN FORMULA

Contains no coal tar.

ENVIRONMENTALLY SAFE

Road Renew contains no harsh chemicals, has no odor and has low VOCs and PAHs.

AVAILABLE IN DRUM OR BULK

#01914 - 55-Gallon Steel Drum

#01915 - Bulk Pricing Available Upon Request

JENNITE

Premium Coal Tar Pavement Sealer

Jennite is a premium quality pavement coating composed of refined coal tar that is fortified with rubber prior to emulsification. In addition, Jennite contains a unique surfactant formulation which allows greater compatibility with asphalt surfaces.

ULTIMATE PROTECTION

Jennite's high solids, polymer modified formula provides increased resistance to oil, gasoline and chemicals.

MAXIMUM DURABILITY

Expect up to three times the wear of other pavement coatings.

WARRANTY PROTECTION

Jennite is applied only by licensed contractors who can provide a written Dual Protection Warranty.

RICH, BLACK "BRAND NEW" LOOK

Jennite's tough, tight, waterproof seal is the longest lasting pavement coating.

SAFER & EASIER TO CLEAN

The Jennite System creates a seamless, skid-resistant and even-textured surface.

AVAILABLE IN DRUM OR BULK

#01004 - 55-Gallon Steel Drum

#01002 - Bulk Pricing Available Upon Request



Mix Design (Based on 100 Gallons)

Jennite is designed to be mixed with mineral aggregate to create a ready-to-use pavement sealer. Minimal dilution with water may be required for workability. DO NOT over dilute.

WATER	SAND	YIELD
25 - 30 Gallons	500 - 600 lbs.	152 - 157 Gallons

All sand used should be clean, dry, pure silica and free of contaminants. Medium fine sand with an A.F.S. rating of 50 to 70 gives best results. There should be no more than 2% retained on 30 mesh or coarser, no more than 10% retained on 140 mesh and no more than 0.3% retained on 200 mesh.

Application

For use over sound asphalt pavement, the following application procedures are recommended for best results:

	GALLONS/ SQ. YARD	GALLONS/ SQ. FOOT
Concentrate	.10	.011
Mix	.15 - .16	.016 - .017
Primer	.015	.0016

One gallon of concentrate will cover 90 square feet. Multiply square yards of surface x 0.1 to determine gallons of concentrate per coat.



Mix Design (Based on 100 Gallons)

Jennite AE is intended to be mixed with water and mineral aggregate to form a ready-to-use pavement sealer. DO NOT over dilute.

WATER	SAND	YIELD
25 - 30 Gallons	500 - 600 lbs.	148 - 157 Gallons

All sand used should be clean, dry, pure silica and free of contaminants. Medium fine sand with an A.F.S. rating of 50 to 70 gives best results. There should be no more than 2% retained on 30 mesh or coarser, no more than 10% retained on 140 mesh and no more than 0.3% retained on 200 mesh.

Application

For use over sound asphalt pavement, the following application procedures are recommended for best results:

	GALLONS/ SQ. YARD	GALLONS/ SQ. FOOT
Concentrate	.10	.011
Mix	.12 - .15	.013 - .016
Primer	.015	.0016



JENNITE AE

Premium Asphalt Emulsion Sealer

Jennite Asphalt Emulsion (AE) is a premium quality pavement coating comprised of concentrated, polymer modified asphalt emulsion specifically formulated as a weather protective, water resistant coating over the asphalt pavements of airports, parking lots and driveways.

ADVANCED FORMULA

Extremely durable due to its polymer fortified resin and fiber reinforced, high solids formula.

PREVENTS OXIDATION

Protects against the drying action of the sun. Reduces raveling, cracking and deterioration.

LUSTROUS BLACK FINISH

Restores a clean, new look.

COMPATIBILITY

Made from an asphalt resin binder which is more compatible with new asphalt pavement. Does not promote hairline cracking.

ENVIRONMENTALLY FRIENDLY

Jennite AE is a low VOC, non-flammable coating that contains no coal tar or harsh chemicals to irritate skin or emit coal tar odors. Approved for use in areas banning high PAH and coal tar Sealers.

AVAILABLE IN DRUM OR BULK

#01005 - 55-Gallon Steel Drum

#01003 - Bulk Pricing Available Upon Request



Solar Reflective Coating

The sun's heat limits material performance and shortens the life cycle of asphalt pavement. Heat accelerates chemical reactions, including those responsible for the degradation of physical and chemical properties. Asphalt pavement is black, and the surface absorbs most of the sunlight.

The solution is to reflect the sunlight from heat absorbing surfaces and SunShield does just that. SunShield's solar reflective coating reflects the sun's heat away from the pavement, rather than absorbing it, reducing solar-induced heat build-up – and the destructive events associated with it.

SunShield provides reflective, long lasting protection with non-fading color and uniform texture to all asphalt pavements including parking lots, paths and walkways.

BUYER WARRANTY PROTECTION

Neyra Industries and our national network of licensed contractors provide a 2-year written Dual Warranty for SunShield solar reflective coating. Neyra Industries warrants the product and the contractor warrants the installation.



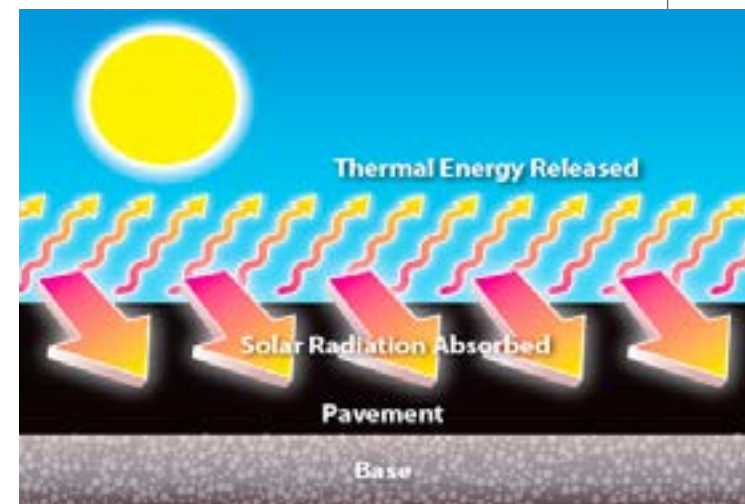
Mix Design (Based on 100 Gallons)

Mix well before use and apply at full strength. A maximum of 10% dilution with water may be required when the ambient temperature is above 85°F. DO NOT over dilute.

Application

One gallon of SunShield will cover 90 square feet. Multiply the amount of square yards of surface by .10 to determine gallons of SunShield needed per coat.

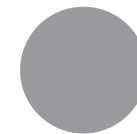
Coverage rates can vary with the application method and the age, texture and porosity of the pavement being coated. See Product Data Sheet for more application details.



COLOR OPTIONS

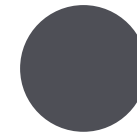
LIGHT GRAY

SRI: 50



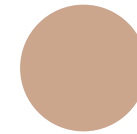
SLATE

SRI: 25



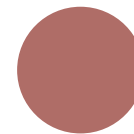
KHAKI

SRI: 38



RED

SRI: 22



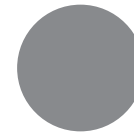
GREEN

SRI: 33



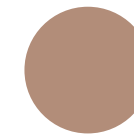
GRAY

SRI: 38



BEIGE

SRI: 30



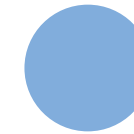
SANDSTONE

SRI: 35



SKY BLUE

SRI: 33



THE SUNSHIELD ADVANTAGE

SunShield is a premium quality, highly pigmented, polymeric surfacing system designed for heat reduction of parking surfaces. The product is formulated with infrared reflective pigments to reduce solar absorption, increase reflectance and achieve the desired solar reflectance index (SRI).

SunShield binds specifically graded sub-angular aggregate for non-slip performance and to achieve a diffuse reflective surface. SunShield contains no PAHs and has an extremely low VOC content.

LEED GREEN BUILDING COMPLIANT

Formulated to meet LEED "High Albedo Coatings" solar reflectance requirements.

HIGH PERFORMANCE

Premium polymers and virgin aggregate create a tough and flexible coating. Lasts up to five times longer than conventional emulsion pavement sealers.

SUSTAINABLE

Keeps the pavement cooler, prolonging its life.

NON-FADING

Pure inorganic reflective pigments provide rich, long-lasting color for years of service.

BUYER WARRANTY PROTECTION

Neyra and our national network of licensed contractors provide a two-year dual warranty.

AVAILABLE IN PAIL, DRUM, TOTE OR BULK

- #04146 - SunShield Gray: 5-Gallon Pail
- #04148 - SunShield Gray: 55-Gallon Steel Drum
- #04149 - SunShield Gray: 185-Gallon Tote
- #01010 - Bulk Pricing Available Upon Request

Contact Neyra for specific item numbers for all available SunShield colors.

ARMORFLEX

Epoxy Fortifier for Coal Tar Sealer

Armorflex is a water-based epoxy-latex additive designed as a fortifier for Tarconite, a coal tar pavement sealer. Pavement coatings fortified with Armorflex will exhibit faster drying and greater resistance to power steering marks than unfortified pavement sealers. Armorflex increases the chemical and fuel resistance of pavement sealers.

STRENGTHENS COATING

Helps hold aggregate in mix and reduces aggregate roll out onto the pavement.

FAST SETTING

Speeds up drying of pavement sealer, even in cool or cloudy conditions.

BEAUTIFIES

Reduces scuffing and tearing and creates a uniform, darker, slate black color of the finished coating.

ENHANCES RESISTANCE

Makes coating more oil and gasoline resistant.

QUICK ACCESS

Allows owner to open pavement to traffic sooner.

SLIP RESISTANT

Even texture and better grip for safer driving conditions.

AVAILABLE IN PAIL OR TOTE

#01202 - 5-Gallon Pail

#01207 - 275-Gallon Tote



Mix Design (Based on 100 Gallons)

A minimum of 2% Armorflex added per 100 gallons of Tarconite concentrate will show significant improvement in the performance of the applied coating. For heavier traffic conditions, up to 3% additive is recommended.

WATER	ARMORFLEX	SAND	YIELD
40 gals.	2 gals.	300 - 500 lbs.	155 - 165 gals.
45 gals.	3 gals.	300 - 500 lbs.	160 - 170 gals.

All sand used should be clean, dry, pure silica and free of contaminants. Medium fine sand with an A.F.S. rating of 50 to 70 gives best results. There should be no more than 2% retained on 30 mesh or coarser, no more than 10% retained on 140 mesh and no more than 0.3% retained on 200 mesh.

Application

For use over sound asphalt pavement, the following application procedures are recommended for best results:

	GALLONS/ SQ. YARD	GALLONS/ SQ. FOOT
Concentrate	.09	.01
Mix	.15 - .18	.019 - .022



Fast Drying Technology for Enhanced Sealcoating Performance

Diamond Shield Fortifier, when added to Neyra Force, will make sealer dry quicker, tougher and blacker, creating a coating that is more resistant to higher traffic loads and scuffing. It is especially recommended in applications where initial toughness is critical due to high traffic volume and/or the need for immediate use of the pavement.

DIAMOND SHIELD	WATER	SAND	YIELD
0.5 - 0.75 gals.	30 gals.	300 - 500 lbs.	144 - 153 gals.

All sand used should be clean, dry, pure silica and free of contaminants. Medium fine sand with an A.F.S. rating of 50 to 70 gives best results. There should be no more than 2% retained on 30 mesh or coarser, no more than 10% retained on 140 mesh and no more than 0.3% retained on 200 mesh.

Application

For use over sound asphalt pavement, the following application procedures are recommended for best results:

	GALLONS/ SQ. YARD	GALLONS/ SQ. FOOT
Concentrate	.09	.01
Mix	.15 - .18	.019 - .022

DIAMOND SHIELD

Quick Traffic Additive

Diamond Shield Fortifier (DSF) is an "Active-Cure" additive. DSF provides "Ultimate Sand Suspension" allowing for quicker drying times while creating a rich, black durable surface.

Diamond Shield can be used with Neyra Force pavement sealer.

ECONOMICAL

Only requires 3/4 gallon of DSF per 100 gallons of sealer.

QUICK ACCESS

Promotes faster drying times allowing quicker access to traffic.

ENHANCES CURING

Improved cure and dry time to hours instead of days because DSF actively cures inside the film, even in shady areas.

BEAUTIFIES

Enhances sand suspension and ensures workability for an even-textured, rich, black durable surface.

INCREASES TOUGHNESS

Reduces scuffing and tearing and creates a uniform, darker, slate black color of the finished coating.

AVAILABLE IN PAIL

#01240 - 2-Gallon Pail

#01246 - 5-Gallon Pail

DURAFLEX

Premium Polymer Fortifier for Asphalt Emulsion

Duraflex is a water-based polymer-latex additive designed as a fortifier for PavShield, an asphalt emulsion pavement sealer. PavShield fortified with Duraflex will exhibit superior durability and improved drying time compared to unfortified pavement sealers.

SUPERIOR DURABILITY

Improved toughness and lengthened life of coating.

FAST SETTING

Speeds up drying of pavement sealer; even in cool or cloudy conditions.

BEAUTIFIES

Reduces scuffing and tearing and creates a more uniform, darker, black color of the finished coating.

QUICK ACCESS

Allows owners to open pavement to traffic sooner.

LESS DILUTION

More solids on the pavement.

AVAILABLE IN PAIL OR TOTE

#01253 - 5-Gallon Pail

#01256 - 275-Gallon Tote



Mix Design (Based on 100 Gallons)

Two percent (2%) Duraflex added per 100 gallons of PavShield concentrate will show significant improvement in the performance of the applied coating.

WATER	DURAFLEX	SAND	YIELD
20 gals.	2 gals.	300 - 500 lbs.	136 - 145 gals.

All sand used should be clean, dry, pure silica and free of contaminants. Medium fine sand with an A.F.S. rating of 50 to 70 gives best results. There should be no more than 2% retained on 30 mesh or coarser, no more than 10% retained on 140 mesh and no more than 0.3% retained on 200 mesh.



Mix Design (Based on 100 Gallons)

Two percent (2%) Maxum added per 100 gallons of PavShield or Neyra AE concentrate will show significant improvement in the performance of the applied coating.

WATER	MAXUM	SAND	YIELD
30 gals.	2 gals.	300 - 500 lbs.	145 - 155 gals.

All sand used should be clean, dry, pure silica and free of contaminants. Medium fine sand with an A.F.S. rating of 50 to 70 gives best results. There should be no more than 2% retained on 30 mesh or coarser, no more than 10% retained on 140 mesh and no more than 0.3% retained on 200 mesh.

MAXUM

Polymer Fortifier for Asphalt Emulsion

Maxum is a water-based polymer-latex additive designed as a fortifier for PavShield and Neyra AE, asphalt emulsion pavement sealers. PavShield and Neyra AE fortified with Maxum will exhibit superior durability and greater resistance to power steering marks compared to unfortified pavement sealers. Maxum also increases the chemical and fuel resistance of PavShield and Neyra AE.

TOUGHENS COATING

Superior bonding stops sand roll out, scuffing and power steering marks.

BEAUTIFIES

Improves sand suspension and ensures workability for an even-textured, rich, black durable surface.

ENHANCES RESISTANCE

Makes coating more oil and gasoline resistant.

QUICK ACCESS

Allows owner to open pavement to traffic sooner.

AVAILABLE IN PAIL OR TOTE

#01230 - 5-Gallon Pail

#01232 - 275-Gallon Tote

NEYRA QSA

Quick Set Additive

Neyra QSA is a water-based latex additive designed as a quick setting agent for Tarconite, a coal tar pavement sealer. When added to pavement sealers it significantly accelerates the drying time. Neyra QSA does not thicken the mixture. It can reduce labor costs as it may allow additional coats to be applied sooner. Sealers mixed with Neyra QSA perform well under cloudy or shady conditions and will exhibit greater resistance to power steering marks, scuffing and tearing.

QUICK SET

Accelerates the drying time of pavement sealers, even under cloudy or shady conditions by 50% or more.

HARDENS COATING

Helps hold aggregate in mix and reduces aggregate roll out onto the pavement.

BEAUTIFIES

Reduces power steering marks, scuffing and tearing and creates a uniform, darker black color of the finished coating.

AVAILABLE IN PAIL OR TOTE

#01212 - 5-Gallon Pail

#01210 - 275-Gallon Tote

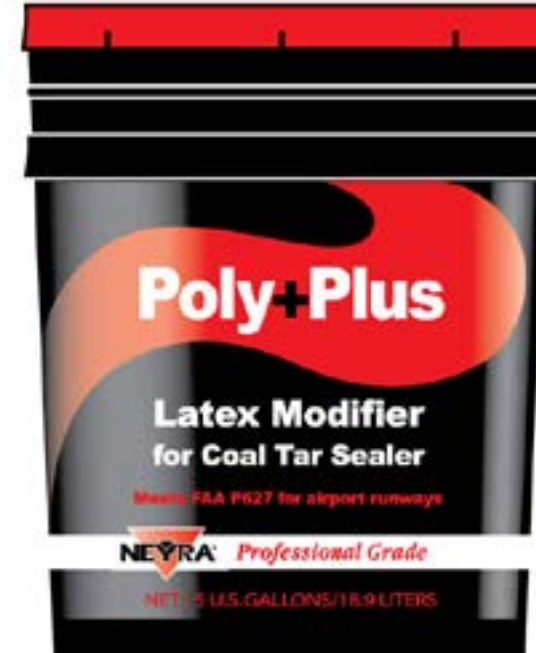


Mix Design (Based on 100 Gallons)

A minimum of 2% Neyra QSA added per 100 gallons of Tarconite concentrate will show significant improvement in the drying time of the applied coating. For heavier traffic conditions, up to 5% additive is recommended.

WATER	NEYRA QSA	SAND	YIELD
30 Gals	2 Gals	300 - 500 lbs.	145 - 155 Gals
35 Gals	5 Gals	300 - 500 lbs.	153 - 163 Gals

All sand used should be clean, dry, pure silica and free of contaminants. Medium fine sand with an A.F.S. rating of 50 to 70 gives best results. There should be no more than 2% retained on 30 mesh or coarser, no more than 10% retained on 140 mesh and no more than 0.3% retained on 200 mesh.



Mix Design (Based on 100 Gallons)

Two percent (2%) Poly+Plus added per 100 gallons of Tarconite concentrate will show significant improvement in the performance of the applied coating.

WATER	POLY+PLUS	SAND	YIELD
45 gals.	2 gals.	300 - 500 lbs.	161 - 170 gals.
55 gals.	4 gals.	300 - 500 lbs.	173 - 182 gals.
65 gals.	6 gals.	300 - 500 lbs.	185 - 194 gals.

All sand used should be clean, dry, pure silica and free of contaminants. Medium fine sand with an A.F.S. rating of 50 to 70 gives best results. There should be no more than 2% retained on 30 mesh or coarser, no more than 10% retained on 140 mesh and no more than 0.3% retained on 200 mesh.

POLY+PLUS

Latex Modifier for Coal Tar Sealer

Poly+Plus is a chemical resistant synthetic rubber latex additive formulated to reinforce and extend Tarconite, a coal tar emulsion pavement sealer. Poly+Plus meets the requirements of FAA Item P-631.

MULTI-PURPOSE

Cuts down on power steering marks.

CAUSES COATING TO SET FASTER

Opens lots to traffic sooner.

IMPROVES COATING RESISTANCE

Improves coating resistance to oil, gasoline and chemicals.

ENHANCES COLOR

Produces a blacker dried coating.

WEARABILITY

Produces a longer lasting coating than standard refined coal tar pavement sealers.

MEETS STANDARDS

For Federal, ASTM Standard and FAA Item P-631 for refined coal tar pavement seal admixtures.

AVAILABLE IN PAIL

#01218 - 5-Gallon Pail

ACRYLASEAL

Acrylic Pourable Crack Sealant

AcrylaSeal is a cold applied, fuel resistant, high solids acrylic crack sealant. It is formulated to be fast setting and remain flexible over a wide range of temperatures. Recommended for asphalt and concrete surfaces. AcrylaSeal provides a tough, resistant barrier against moisture for cracks up to 1/2" in width on asphalt and concrete pavements

READY-TO-USE

A convenient, fast and easy one-component system.

GOOD ADHESION

A penetrating surfactant formulation ensures bonding to the surface.

EXCELLENT RESILIENCE

A superior synthetic polymer compound provides elasticity. Contains no asphalt - will not track.

RUBBERIZED

Improves pliability in adverse weather conditions.

LESS SHRINKAGE

A high solids formulation prevents excessive shrinkage.

AVAILABLE IN JUG, CASE OR PAIL

- #04101 - Black 1-Gallon Jug
- #04101 - Black 1-Gallon Case*
- #05506 - Black 5-Gallon Pail
- #04102 - Gray 1-Gallon Jug
- #04102 - Gray 1-Gallon Case*
- #04103 - Gray 5-Gallon Pail

**Case includes four 1-Gallon jugs and has the same product number as a single jug. When ordering, please indicate the unit of measure needed.*



Mix Design

Use full strength. Do not dilute.

Application

Fill crack with AcrylaSeal. Squeegee any excess flush with pavement surface. Allow to dry. One gallon of AcrylaSeal fills the following approximate lineal feet:

WIDTH	DEPTH		
	1/8"	1/4"	1/2"
1/8"	800	400	200
1/4"	400	200	100
1/2"	200	100	50



Mix Design (Based on 1 Gallon)

As supplied, FixMix is a concentrated material intended to be mixed with mortar mix.

Pour one gallon of FixMix into a clean, empty 5-Gallon pail. Add one 60 lb. bag of mortar mix while stirring thoroughly. Do not add water. Extra FixMix should only be added after thoroughly mixing. Add only as much FixMix as necessary to achieve a workable consistency. Mix only as much as can be used within one hour.

FIXMIX	MORTAR	YIELD
1 Gallon	60 lbs. Bag	3 Gallons

Application

Properly mixed, FixMix will dry quickly. The following application procedures are recommended for best results:

- One gallon of FixMix will make three gallons of wet mix, which is enough to fill five square feet by one inch deep. Coverage rates can vary with age, texture and porosity of the pavement. Lifts up to one inch thick and will dry in four hours.
- To make primer, mix one part FixMix to two parts water. Allow primer to dry thoroughly before placing mix.
- As a primer, FixMix should be brushed over the prepared asphalt surface and allowed to dry thoroughly prior to application of mixed product.

FIXMIX

Quick Patch Binder

FixMix is a high tensile strength, pigmented, water based, acrylic latex bonding agent. FixMix is formulated to patch new or existing asphalt surfaces.

SAVES TIME

Fast, permanent repair for oil spots on parking lots.

NON-SHRINKING

Stays leveled and does not shrink or crack, even with one-inch thick applications per lift.

FAST SETTING

Patches require less time before coating.

VERSATILE

FixMix is also an excellent oil spot primer that greatly improves adhesion of coating to oil spot.

FUEL RESISTANT

FixMix creates an oil resistant repair.

AVAILABLE IN JUG OR CASE

- #05608 - 1-Gallon Jug
- #05608 - Case*

**Case includes six 1-Gallon jugs and has the same product number as a single jug. When ordering, please indicate the unit of measure needed.*

GATORFILL

Trowelable Surface Mastic

Gatorfill is a blend of asphalt emulsion, high molecular weight acrylic polymer, graded rubber and fine ceramic aggregate designed to fill cracks on asphalt pavement surfaces.

TROWEL GRADE PERFORMANCE

This polymer fortified emulsion reinforced with fine aggregate provides a durable mastic for alligatored areas.

HIGH SOLIDS FORMULA

High elastomeric content minimizes shrinkage in deep and/or wide cracks.

HIGH POLYMER CONTENT

Ensures greater bonding, durability and flexibility.

WORKABILITY

Lightweight ceramic aggregate improves spreadability for easy feathering on asphalt surfaces.

AVAILABLE IN PAIL

#05602 - 5-Gallon Pail



Mix Design

Gatorfill is ready-to-use. No heating or dilution is required. Stir well before use.

Application

For filling deep cracks or minor depressions, a second application may be required as some shrinkage can occur. Allow a minimum of four hours between applications.



Mix Design

Micro Mix is ready-to-use. No heating or dilution is required. Stir well before use.

Application

For filling deep holes, cracks or minor depressions, a second application may be required as some shrinkage can occur. Allow a minimum of eight hours between applications.

MICRO MIX

Trowelable Surface Mastic

Micro Mix is a blend of asphalt emulsion and fine mineral aggregate designed to fill cracks and patch asphalt pavements.

Micro Mix is designed as a crack filler for large cracks or minor depressions and as a surface treatment for alligatored areas on asphalt pavements.

TROWEL GRADE PERFORMANCE

Refined asphalt emulsion with small aggregate makes it a perfect trowel grade for very wide cracks.

WORKABILITY

Can be feathered easily without losing adhesion to a sound asphalt concrete base.

CONVENIENT

Ready-to-use, no mess or loss of time mixing.

SLATE BLACK COLOR

Makes resealing unnecessary.

THIN SET

Makes repairs possible, even on minor surface imperfections.

AVAILABLE IN PAIL OR BULK

#05601 - 5-Gallon Pail

#03194 - Bulk Pricing Available Upon Request

PLYOLASTIC

Pourable Crack Filler

Plyolastic is a rubberized asphalt emulsion crack filler formulated to be flexible and fast setting for use on asphalt pavements. Plyolastic provides a tough, resilient barrier against moisture for cracks up to 1/2" in width.

COMMERCIAL GRADE PERFORMANCE

This fortified emulsion is a flexible and durable crack filler for asphalt surfaces.

GOOD ADHESION

A penetrating surfactant formulation ensures bonding to the surface.

EXCELLENT RESILIENCE

A superior synthetic polymer compound provides elasticity.

RUBBERIZED

Contains latex polymer to improve durability, flexibility and drying time.

LESS SHRINKAGE

A high solids formulation prevents excessive shrinkage.

READY-TO-USE

A convenient, fast and easy one-component system.

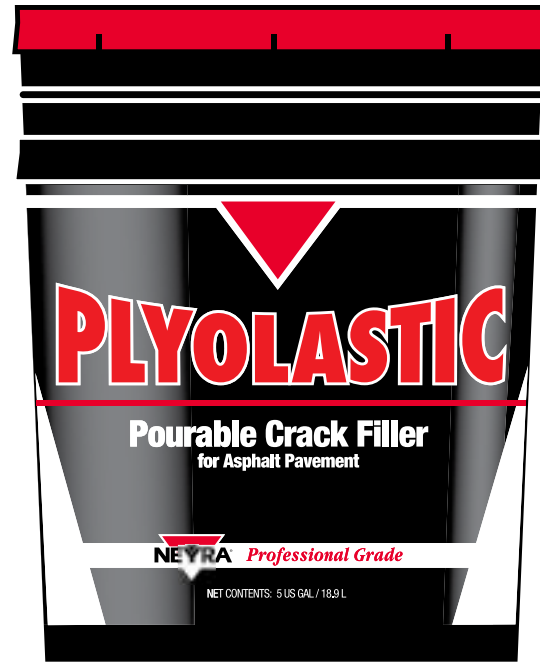
AVAILABLE IN JUG, CASE OR PAIL

#05504 - 1-Gallon Jug

#05504 - Case*

#05503 - 5-Gallon Pail

**Case includes six 1-Gallon jugs and has the same product number as a single jug. When ordering, please indicate the unit of measure needed.*



Mix Design

Use full strength. Do not dilute. Mix well before use.

Application

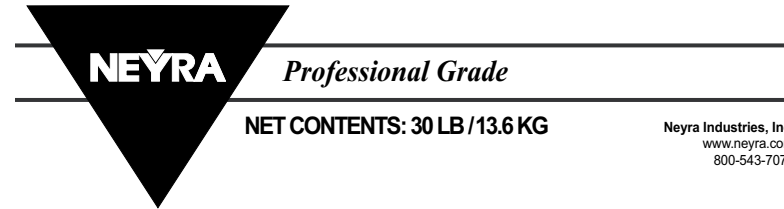
Fill crack with Plyolastic. Squeegee any excess flush with pavement surface. Allow to dry. One gallon of Plyolastic fills the following approximate lineal feet:

WIDTH	DEPTH		
	1/8"	1/4"	1/2"
1/8"	1200	600	300
1/4"	600	300	150
1/2"	300	150	75

For wide and deeper cracks, hot-applied Thermo-Seal crack sealants are recommended.

PLS

Crack/Joint Thermo-Sealant



Mix Design

Blocks of PLS are formulated as a single component system. Do not add to or mix with any other material.

Application

Install heated sealant directly into cracks or joints not to exceed a 4" wide band. Thickness should be controlled to not more than 1/8" above pavement surface. Finished sealed cracks and joints will be uniformly level. Refill to achieve a flush to 1/8" concave surface appearance. See Product Data Sheet for application chart.

PERFORMANCE REQUIREMENTS	
Property	Results
Penetration at 77° F	55mm
Penetration at 0° F	28mm
Flow at 140° F	0mm
Resilience	60% min.
Elongation at 77° F	600%
Bond Test	Pass 100% extension at 0° F
Asphalt Concrete	Compatible

PLS

Crack/Joint Thermo-Sealant

PLS is a highly modified, single component, hot applied, rubber/asphalt joint and crack sealant. Furnished as a solid, it is an elastomeric sealant which is compatible with and bonds aggressively to dry and clean concrete or asphalt pavements.

For use in oil jacketed kettles only.

CLIMATICALLY ENGINEERED

Formulated for a firm set in warmer climates.

TOUGH & PLIABLE

A "no tracking" formula for parking lots.

SETS FIRM & FAST

You can seal in 15 minutes or less.

NO BLEED THROUGH

Ideal for crack filling under sealcoating, slurry seals and overlays.

PROVEN PERFORMANCE

Conforms to many ASTM, AASHTO and Federal specs for crack sealants including ASTM D1190 and D6690 Type I.

OPTIMUM TEXTURE

Granular rubber improves sealcoat adhesion.

AVAILABLE IN BOX OR SKID

#05702 - Per Pound

**Boxes are 30 lbs., and Skids include 70 boxes.*

SPEC+PLUS

Crack/Joint Thermo-Sealant

Spec+Plus is a highly modified, single component, hot applied, rubber/asphalt joint and crack sealant. Furnished as a solid, it is an elastomeric sealant which is compatible with and bonds aggressively to clean and dry concrete or asphalt pavements.

Recommended for oil jacketed kettles.

PURE POLYMER PERFORMANCE

Longest lasting crack/joint sealant for parking lots and roads.

RESILIENT

Formulated to perform under the extreme expansion and contraction conditions of colder climates.

PROVEN PERFORMANCE

Meets and exceeds the standards of ASTM, AASHTO and federal specs for crack sealants, including D1190, D3405 and D6690 Type II & III.

ENERGY SAVINGS

Low pour temperatures of 325° means lower heating cost and less time on the job.

CONTAINS NO FILLERS

Will not settle, jell or cook in kettle.

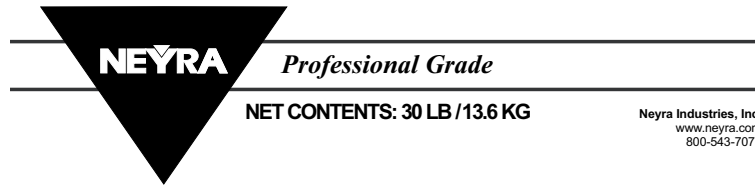
AVAILABLE IN BOX OR SKID

#05708 - Per Pound

**Boxes are 30 lbs., and Skids include 70 boxes.*

Spec+Plus

Crack/Joint Thermo-Sealant



Mix Design

Blocks of Spec+Plus are formulated as a single component system. Do not add to or mix with any other material.

Application

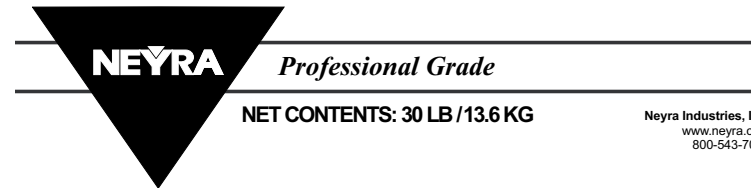
Install heated sealant directly into cracks/joints not to exceed a 4" wide band. Thickness should be controlled to not more than 1/8" above pavement surface. Finished sealed cracks and joints will be uniformly level. Refill to achieve a flush to 1/8" surface concave appearance. See Product Data Sheet for application chart.

PERFORMANCE REQUIREMENTS

Property	Results
Penetration at 77° F	60mm
Penetration at 0° F	30mm
Flow at 140° F	< 0mm
Resilience	60% min.
Elongation at 77° F	600%
Bond Test	Pass 50% extension at -20° F
Asphalt Concrete	Compatible

Thermoflex

Crack/Joint Thermo-Sealant



Mix Design

Blocks of Thermoflex are formulated as a single component system. Do not add to or mix with any other material.

Application

Install heated sealant directly into cracks/joints not to exceed a 4" wide band. Thickness should be controlled to not more than 1/8" above pavement surface. Finished sealed cracks and joints will be uniformly level. Refill to achieve a flush to 1/8" concave surface appearance. See Product Data Sheet for application chart.

PERFORMANCE REQUIREMENTS

Property	Results
Penetration at 77° F	45 - 55mm
Softening Point	200° min.
Flow at 140° F	0mm
Resilience	60% min.
Elongation at 77° F	1000%
Bond Test	Pass 50% extension at 0° F
Set Time	15 minutes max

THERMOFLEX

Crack/Joint Thermo-Sealant

Thermoflex is a premium, single component, hot applied, asphalt/rubber joint and crack sealant. Furnished as a solid, it is an elastomeric sealant which is compatible with and bonds aggressively to clean and dry concrete or asphalt pavements. It is designed to be effective in many climates. It is a true direct fire product capable of being reheated and is especially effective under sealcoats, slurry seals and overlays because it will not bleed through.

For use in direct fire kettles.

DIRECT FIRE FORMULA

Tolerates reheating and will not jell in kettle.

NO TRACKING

A tough and pliable formula for parking lots and driveways.

NO BLEED THROUGH

Ideal for crack filling under sealcoating, slurry seals and overlays.

RESILIENT

Formulated to perform under the expansion and contraction conditions of all climates.

SETS FIRM & FAST

You can seal in 15 minutes or less.

PROVEN PERFORMANCE

Meets and exceeds the standards of AASHTO M173 and ASTM D6690 Type I.

AVAILABLE IN BOX OR SKID

#05710 - Per Pound

**Boxes are 30 lbs., and Skids include 70 boxes.*

ASPHALT TAC

Tack Coat

Asphalt-Tac is designed for priming asphalt or concrete prior to asphalt overlay. It can also be used for priming prior to installing patches. It is an asphalt emulsion that meets DOT standards for SS-1h and ASTM D977, Standard Specification for Emulsified Asphalts.

GOOD ADHESION

A penetrating surfactant package ensures bonding to the surface.

FAST SETTING

Less waiting time required before sealcoating.

READY-TO-USE

A convenient, fast and easy one-component product.

AVAILABLE IN PAIL, DRUM OR TOTE

#06307 - 5-Gallon Pail

#06308 - 55-Gallon Steel Drum

#06311 - 275-Gallon Tote



Mix Design

For priming patches, do not dilute. Use at full strength. Mix well before use. As a wash coat on pavement surfaces, cut with at least five parts water to one part Asphalt-Tac.

Preparation

Surface should be dry, clean and free of all loose material, dirt and dust.

Application

As a tack prior to asphalt overlays or under patches, apply .1 gallon per square yard of Asphalt-Tac to the prepared surface.



Mix Design

Use full strength. Do not dilute.

Preparation

The area to be treated must be free of dirt and grime. Scrape away build-up of oil, gas and/or grease deposits before priming.

Application

The coverage rate will vary depending on the condition of pavement and on the application method. Rough surface will consume more when applied with a roller or brush.

PETROBOND

Oil Spot Primer

Petrobond is an oil spot primer formulated to ensure adhesion of pavement sealer to oil, gas, grease and chemical stained areas on asphalt pavements. It may be used as a primer for new asphalt patches. Petrobond can also be used to de-tack fresh hot applied crack and joint sealant. It also is a blend of copolymers and surfactants.

RAPID DRYING

In just minutes, you can sealcoat.

ENSURES BONDING

Penetrating surfactant package provides maximum bond to oil stains and sealer.

PREVENTS BLEEDING

The tough copolymers provide maximum shield against bleeding.

VERSATILE

Can be used to de-tack fresh hot applied sealants.

AVAILABLE IN JUG, CASE OR PAIL

#06101 - 1-Gallon Jug

#06101 - Case*

#06103 - 5-Gallon Pail

**Case includes six 1-Gallon jugs and has the same product number as a single jug. When ordering, please indicate the unit of measure needed.*

POLYPRIME

Penetrating Pavement Primer

Polyprime is a multi-polymer penetrating primer in a concentrated form. It is specifically formulated to rejuvenate oxidized pavement surfaces, allowing greatly improved adhesion of pavement sealer.

MAXIMUM ADHESION

Optimizes adhesion of pavement sealer to oxidized asphalt pavements, which creates a stronger surface and allows the pavement sealer to adhere properly.

MAXIMUM PENETRATION

Formulated with sub-micron particle sized polymers to insure deep penetration into oxidized surfaces.

ENHANCED SEALER SPREADABILITY

Polyprime prevents rapid dehydration of sealer, enhancing spreadability.

SPECIALTY APPLICATIONS

Greatly improves adhesion to oily filmed pavements, polished aggregate surfaces and fine mix asphalt pavements.

NON-FLAMMABLE

Polyprime is a water-based material, easy to use and easy to apply with conventional sealcoating equipment.

RAPID DRYING

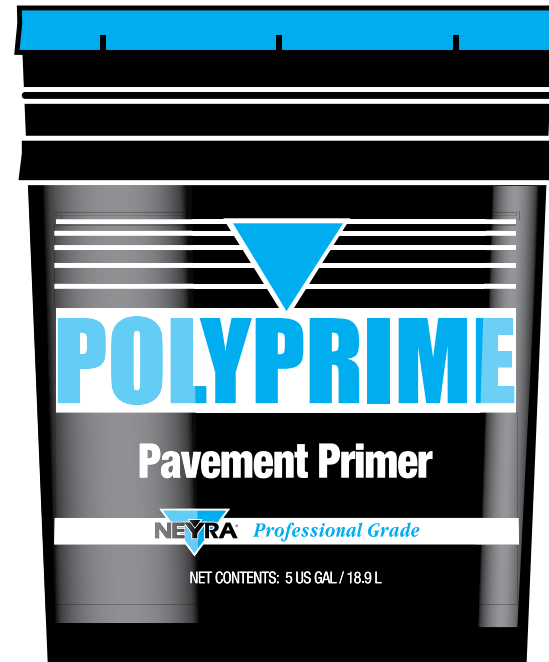
Polyprime dries quickly and does not delay sealcoating.

AVAILABLE IN PAIL, DRUM OR TOTE

#06107 - 5-Gallon Pail

#06106 - 55-Gallon Steel Drum

#06113 - 275-Gallon Tote



Mix Design (Based on 100 Gallons)

Polyprime is a concentrated material intended to be mixed with water to form a ready-to-use primer. Mix one part Polyprime with two parts water. Mix occasionally during use.

WATER	YIELD
200 Gallons	300 Gallons

Application

For use over sound asphalt pavement, the following application procedures are recommended for best results:

	GALLONS/ SQ. YARD	GALLONS/ SQ. FOOT
Diluted Mix	.03 - .06	.003 - .006



Mix Design (Based on 100 Gallons)

Polyprime RPA is supplied in a ready-to-use form. No additional dilution is needed.

Application

For use over sound asphalt pavement. One gallon of Polyprime RPA will cover up to 300 square feet.

Coverage rates can vary with the application method and the age, texture, and porosity of the pavement to be sealed. Avoid over or under application of the product. Polyprime RPA is formulated to be used in a continuous, thin film.

Application must be made when ambient temperatures and pavement temperatures are above 50°F. Good drying conditions above 50°F are required during the subsequent eight hours and no temperatures below 50°F should be anticipated for 48 hours. Night time application is not recommended.

After the application of Polyprime RPA has dried, the surface is then sealed with a pavement sealer or recreational coating.

POLYPRIME RPA

Rust Preventative Pavement Primer

Polyprime RPA is a multi-polymer penetrating primer formulated to stop rust in pavements from penetrating the sealer or recreational coating. It provides all the benefits of Polyprime allowing greatly improved adhesion of the pavement surface

BEAUTIFIES

Reduces rust spot bleed-through.

REDUCES STAINING

Reduces, and in some cases, eliminates active aggregate staining of asphalt covered with acrylic color coats.

MAXIMUM ADHESION

Optimizes adhesion of pavement sealer to oxidized asphalt pavements, which creates a stronger surface and allows the pavement sealer to adhere properly.

MAXIMUM PENETRATION

Formulated with sub-micron particle sized polymers to insure deep penetration into oxidized surfaces.

ENHANCED SEALER SPREADABILITY

Polyprime RPA prevents rapid dehydration of sealer, enhancing spreadability.

RAPID DRYING

Polyprime RPA dries quickly; does not delay sealcoating.

REQUIRES NO ADDITIONAL WATER

No water added, unlike most additives.

AVAILABLE IN DRUM OR BULK

#01011 - 55-Gallon Steel Drum

#01010 - Bulk Pricing Available Upon Request

LOCKDOWN

Fugitive Dust Control

LockDown is a concentrated polymer emulsion. It is specifically formulated as a dust palliative and soil stabilizer providing superior penetration of the surface and binding of fine dust particles. LockDown does not simply fill the voids between dust particles. With the combination of ultra fine particle size, a superior surfactant and high adhesion polymer molecules, LockDown offers better penetration and binding than salt, oil or asphalt based products.

ENVIRONMENTALLY SAFE

Based on acrylic latex. Contains no PAHs, waste oil, petroleum distillates or salts.

LONG LASTING

One installation can give up to a year of service.

ECONOMICAL

Low cost per year of use and does not require repeated applications.

EASY TO USE

LockDown blends readily with water. No agitation or mixing is required. Can be applied through gravity fed water trucks.

NO VOC

Contains 0 gal./L (0 lb./gal.) VOC content.

AVAILABLE IN DRUM OR TOTE

#07020 - 55-Gallon Steel Drum

#07025 - 275-Gallon Tote



Mix Design (Based on 100 Gallons)

LockDown is a highly concentrated material intended to be mixed with clean fresh water. Always pump the concentrate into the mix tank first, then pump the water in from the bottom. If filling from the top is an option, make sure the hose is immersed into the liquid to minimize foaming. Dilution rates vary from 6:1 to 20:1 water to concentrate depending on the application. The deeper the penetration required, the harder the soil (i.e. clay, sand or loam) and the deeper the dust, the greater the cut with water required.

RATIO	WATER	YIELD
6:1	600 Gallons	700 Gallons
8:1	800 Gallons	900 Gallons
10:1	1000 Gallons	1100 Gallons
20:1	2000 Gallons	2100 Gallons

Application

For use over unpaved dirt roads, gravel roads and parking lots, road berms, material stockpiles and hydroseeding, the following application procedures are recommended for best results:

- Dirt & Gravel Roads (Heavy Traffic): Use a 6:1 water to LockDown ratio and apply 1.0 gallon mix per square yard or .12 gallon per square foot. A reapplication may be required at intervals to control re-deposition.
- Dirt & Gravel Roads (Medium/Light Traffic) and Gravel Parking Lots: Use an 8:1 water to LockDown ratio and apply 1.17 gallon mix per square yard or .13 gallon per square foot. Reapplication may be required at intervals to control re-deposition.
- Road Berms & Material Stockpiles: Use a 10:1 water to LockDown ratio and apply 1.1 gallon mix per square yard or .12 gallon per square foot. Reapplication may be required at intervals to control re-deposition.
- Hydroseeding: Use a 20:1 water to LockDown ratio and apply 1.0 gallon mix per square yard or .12 gallon per square foot. Reapplication may be required at intervals to control re-deposition.



Surface Conditions

Surfaces should be cured, clean, dry, sound and free from oil, grease, antifreeze, sand and other debris and/or chemicals. Loose and lifting paint should be removed prior to application. Existing coatings or sealers may interfere with paint adhesion. New concrete and asphalt should be completely cured before applying (30 days for concrete, 14 days for asphalt is recommended).

Check Franklin Paint technical data sheet for more information. If surface condition cannot be determined, a test stripe should be applied in an inconspicuous location.

Application

Formulated for use with airless or conventional air atomized spray equipment. For best results, apply when air and surface temperatures are above 50°F and relative humidity is below 85%.

Cold paint may be heated to 110°F for desired flow properties. Heating waterborne paint will not accelerate dry time.



FRANKLIN PAINT

Fast Dry Traffic Marking Paint

Hydrophast™ is a lead free, VOC compliant fast drying, 100% acrylic waterborne traffic paint. Conforms to the new Federal Specifications TT-P-1952E Type I & II as well as most state and federal specifications.

For use on bituminous, Portland cement and concrete pavements as well as various sealcoat applications. May be applied with conventional or airless sprayers.

FAA Compliant Colors:

White, Yellow, Black, Red

PREMIUM DRYING

Fastest drying waterborne paint available.

SUPERIOR COVERAGE

Abundant pigment for excellent one-coat coverage.

NO CLOGGING

Micro-fine pigment dispersion.

PRODUCT ADVANTAGES

- Low VOC- below 100 g/L
- Fast dry for easy traffic control
- Easy clean up with water
- For use on both concrete and asphalt
- Works well over various sealcoat applications
- Excellent bead retention (can be used without)
- Bright color for crisp lines
- Great for symbols, legends and lane marking
- Methanol free

AVAILABLE IN PAIL

- #04206 - White Premium Hydrophast 5-Gallon Pail
- #04208 - Yellow Premium Hydrophast 5-Gallon Pail
- #04228 - Red Hydrophast 5-Gallon Pail
- #04204 - Blue Hydrophast 5-Gallon Pail
- #04202 - Black Hydrophast 5-Gallon Pail



WHY CHOOSE US?



Neyra is dedicated to manufacturing the highest quality, all-weather athletic surfacing solutions for both indoor and outdoor application. With customer service a top priority, our team of highly experienced professionals provide personal attention and on-site technical support to contractors, club owners, tennis professionals, school officials, engineers and architects. Our growth is a direct reflection of the enduring relationships we have with our customers. As a result, every Neyra employee has a "customer first" attitude and strives for complete customer satisfaction.

With over 50 years of experience and innovation, Neyra is the most trusted name in the pavement maintenance and sports surfacing industry. A family-owned company constructed on a foundation of quality and integrity, Neyra is more than just a manufacturer of superior paving products and athletic surfacing solutions - we are your business partner.

Complete Surfacing System

Dynaflex Sports Surfacing is the premier product line of athletic surfacing solutions by Neyra Industries. Since 1980, Neyra has manufactured a full assortment of sports surfacing products for tennis and pickleball courts, running tracks, playgrounds, basketball courts and other recreational surfaces under the Dynaflex Sports Surfacing brand. Whether building a new court or restoring one, Dynaflex Sports Surfacing offers a complete surfacing system for all projects.

LONG LASTING

Dynaflex provides customers with a premium 100% acrylic polymer fortified sports surface with reinforcing pigments that provide up to 50% greater wear.

EASE OF APPLICATION

Dynaflex is formulated for increased ease of use. Just add sand, water, mix and apply. Dynaflex also has excellent sand suspension during application and provides a uniform appearance and playing surface.

ENGINEERED FOR CUSTOM PLAY

The high solids formulation of Dynaflex allows the mix design to be customized to the speed of play and foot traction desired.

EVEN-TEXTURED, NON-GLARE

Dynaflex will maintain its beautiful appearance through years of active play. A sun blocker protects the rich, true colors of Dynaflex from fading and bleaching caused by the sun.

Unleash Your Creativity

Dynaflex offers a full line of standard colors with the ability to color match and customize virtually any color combination. Standard colors shown below.



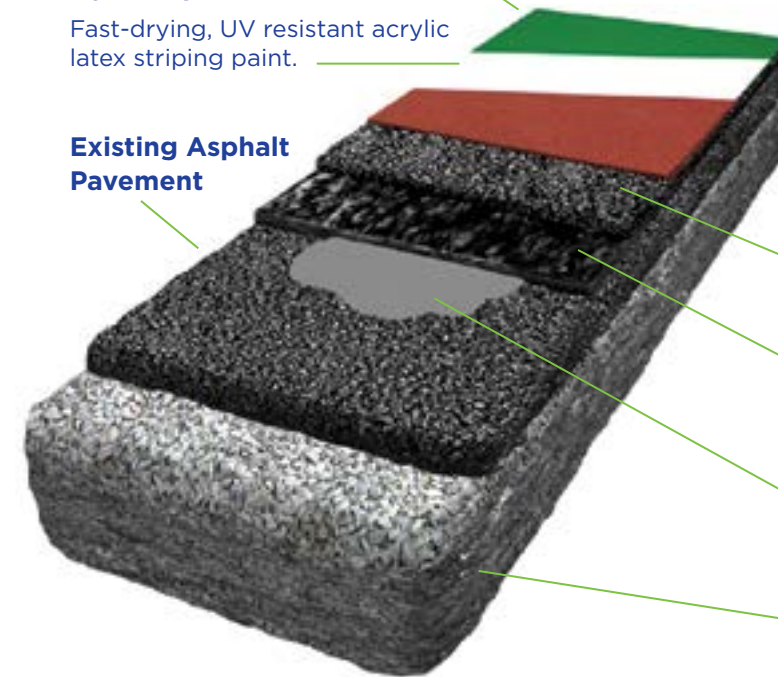
DynaColor Acrylic Color Coating

Coats of Dynaflex depends on your desired speed of play.

DynaStripe Line Paint

Fast-drying, UV resistant acrylic latex striping paint.

Existing Asphalt Pavement



DynaCushion Base and Top

Provides a premium, flexible acrylic cushion coating.

Dynaflex Acrylic Resurfacer

Creates a smooth court surface. Number of coats depends on porosity.

Dynabinder Quick Patch Binder

Patches minor depressions on court surfaces.

Crushed Stone / Suitable Base

LEED COMPLIANT

Dynaflex can be formulated in custom colors to meet LEED green building requirements.



DYNAFLEX ACRYLIC RESURFACER

Premium Acrylic Emulsion

Dynaflex Acrylic Resurfacer is a premium quality, highly pigmented, acrylic emulsion recommended for smoothing and filling texture on asphalt surfaces prior to application of Dynaflex DynaColor acrylic color coating.

In addition, it can be used as a finish for any asphalt or concrete surface where a durable black surface is desired.

FAST DRYING

Allows multiple coats in one working day.

SPECIALLY FORMULATED

100% compatible with DynaColor acrylic color coating.

ECONOMICAL

Highly concentrated formula with water and filler addition by user reduces applied cost.

NON-SCUFFING

100% synthetic will not mark tennis balls or shoes.

EASY TO USE

Non-settling, easy to mix.

VERSATILE

May be used as final coat if black non-fading surface is desired, or as a minor bird bath filler without excessive shrinkage.

AVAILABLE IN PAIL, KEG OR DRUM

#02336 - Black 5-Gallon Pail

#02342 - Black 30-Gallon Keg

#02304 - Black 55-Gallon Steel Drum

#02301 - Neutral 5-Gallon Pail

#02302 - Neutral 55-Gallon Steel Drum



Mix Design (Based on 55 Gallons)

Dynaflex Acrylic Resurfacer is a highly concentrated material intended to be mixed with water and mineral aggregate to form a ready-to-use coating. If using as a resurfacer, add half as much water as concentrate and 8-12 lbs. of sand per gallon of Dynaflex Acrylic Resurfacer.

WATER	SAND	YIELD
24-28 Gallons	400 - 750 lbs.	103 - 113 Gallons

If using as a finish coat, reduce the dilution to 0.4 gallons of water and 5 lbs. of sand per gallon of Dynaflex Acrylic Resurfacer.

All sand used should be clean, dry, pure silica and free of contaminants. Medium fine sand with an A.F.S. rating of 50 to 70 gives best results. There should be no more than 2% retained on 30 mesh or coarser, no more than 10% retained on 140 mesh and no more than 0.3% retained on 200 mesh.

Application

Each application of the properly mixed, ready-to-use material will cover at a rate of 0.15 to 0.19 gallons per square yard. As a finish coat, the consumption would be 0.10 to 0.13 gallons per square yard. Coverage rates can vary with the age, texture and porosity of the pavement to be sealed and with the method of application.

Mix Design (Based on 55 Gallons)

DynaSurf flexible acrylic resurfacer is a highly concentrated material intended to be mixed with water and mineral aggregate to form a durable coating. Upon choice of application, the following mix design can be used:

WATER	SAND	YIELD
12.5 Gallons	500 lbs.	90 Gallons

Application

Each application of the properly mixed, ready-to-use material will cover at a rate of 0.15 to 0.19 gallons per square yard. Coverage rates can vary with the age, texture and porosity of the pavement to be sealed and with the method of application.

DYNASURF

Flexible Acrylic Resurfacer

DynaSurf flexible acrylic resurfacer is a highly flexible resurfacer formulated of premium quality pigmented acrylic emulsion. The product is formulated with a surfactant package which promotes superior adhesion to concrete or asphalt surfaces.

DynaSurf flexible acrylic resurfacer is recommended for smoothing and filling texture on asphalt, concrete and mat system surfaces prior to the application of Dynaflex DynaColor acrylic color coating. Dynasurf is also compatible with crack repair systems.

FLEXIBLE ACRYLIC RESURFACER

Provides greater elongation and flexibility than standard acrylic resurfacers.

FAST DRYING

Allows multiple coats in one working day.

EASY TO USE

Non-settling, easy to mix.

VERSATILE

Designed to be used with crack repair systems and mat systems.

AVAILABLE IN PAIL, KEG OR DRUM

#04131 - 5-Gallon Pail

#04132 - 30-Gallon Keg

#04133 - 55-Gallon Steel Drum

DYNACOLOR

Acrylic Color Coating

DynaColor acrylic color coating is a premium quality, highly pigmented, acrylic emulsion that provides greater toughness, flexibility and longer service life. DynaColor is also formulated with a surfactant package which promotes superior adhesion to concrete or asphalt surfaces. DynaColor contains no asbestos or mercury.

LONG LASTING

Premium 100% acrylic polymer fortified with reinforcing pigments providing up to 50% greater wear.

EASE OF APPLICATION

Engineered for improved ease of use. Just add water, mix and apply by squeegee or spray.

NO STREAKING

Formulation provides uniform application and color over asphalt or concrete surfaces.

SAND SUSPENSION

Excellent sand suspension during application. Provides uniform appearance and playing surface.

NON-FADING COLORS

Pure, high-quality synthetic mineral oxide pigments are used for improved color stability for years of service.

AVAILABLE IN PAIL, KEG OR DRUM

COLORS	5-GAL PAIL	30-GAL KEG	55-GAL DRUM
Dark Green	02212	02253	02211
Tournament Green	02215	02254	02214
Light Green	02266	02256	02258
Sky Blue	02206	02251	02205
Tournament Blue	02220	02255	02219
Red	02209	02252	02208
Gray	02307	02257	02306
Purple	02262	02263	02261
Beige	02203	02250	02202



LEED GREEN BUILDING COMPLIANT TO MIX

Custom colors can be formulated to meet "High Albedo Coatings" requirements.

Mix Design (Based on 55 Gallons)

DynaColor is a highly concentrated material intended to be mixed with water and mineral aggregate to form a ready-to-use color coating.

WATER	SAND	YIELD
22 - 28 Gallons	300 - 400 lbs.	90 - 100 Gallons

All sand used should be clean, dry, pure silica and free of contaminants. Fine sand with an A.F.S. rating of 70 to 100 gives best results.

Application

New construction of recreational surfaces often requires Dynaflex Acrylic Resurfacer prior to color coating. After the resurfacer or cushion underlayment has been given adequate time to dry thoroughly, DynaColor texture color coats shall be applied by rubber-bladed squeegee in a minimum of two applications. As a result, on a smooth sand or rubber textured surface, consumption of DynaColor acrylic color coating is calculated at a rate of .05 to .1 gallon per square yard per coat or one gallon per 10 to 20 square yards per coat.

Mix Design (Based on 30 Gallons)

As supplied, Center Court is a highly concentrated material intended to be mixed with water to form a ready-to-use pavement resurfacer and finish coat. Per 30 gallon keg of Center Court, add 17 gallons of water.

WATER	YIELD
12 - 15 Gallons	47 Gallons

Application

Coverage rates can vary with the age, texture and porosity of the pavement to be sealed and with the method of application. New construction often requires resurfacer coats prior to color coating. On a smooth, sand textured surface, a properly mixed, ready-to-use material will cover at a rate of 12 to 15 square yards, per gallon.

AVAILABLE IN 30-GALLON KEG

- #02612 - Dark Green
- #02603 - Tournament Green
- #02640 - Light Green
- #02619 - Sky Blue
- #02621 - Tournament Blue
- #02607 - Red
- #02627 - Gray
- #02641 - Purple
- #02623 - Beige



CENTER COURT

Textured Coating

Center Court is a pigmented concentrated acrylic textured coating system. This silica-fortified coating will provide a smooth, even-textured and flexible surface. Center Court is applied as a top coat after dilution with water.

LONG LASTING

Premium 100% acrylic polymer fortified with reinforcing pigments provide up to 50% greater wear.

EASE OF APPLICATION

Engineered for improved ease of use. Just add water, mix and apply by squeegee or spray.

NO STREAKING

Formulation provides uniform application and color over asphalt or concrete surfaces.

NON-FADING COLORS

Pure, high-quality synthetic mineral oxide pigments are used for improved color stability for years of service.

PERFORMANCE ENGINEERED

Contains proper aggregate for playability and nonslip performance.

LEED GREEN BUILDING COMPLIANT TO MIX

Custom colors can be formulated to meet "High Albedo Coatings" requirements.

PICKLEPLAY

Textured Coating

PicklePlay is a tournament grade acrylic Pickleball surface. PicklePlay is a sand infused acrylic color concentrate designed for a nonskid, safe player experience. Available in nine standard colors and custom colors upon request, our Pickle Play allows you to unleash your creativity when designing your court layout.

Engineered with premium acrylic polymers and reinforcing pigments, PicklePlay is long lasting, durable and even textured providing a non-glare surface with 50% reduced wear.

PICKLEPLAY PRO SERIES - Looking for longer play with less fatigue and pain? Our PicklePlay Pro Series is the answer! A combination of nine layers of acrylic coatings, including seven layers of DynaCushion increases comfort while maintaining speed of play, resulting in extended enjoyment on the court.

DURABLE

Guards asphalt and concrete as it beautifies. Protects against surface water related damage.

LONG LASTING

Premium 100% acrylic polymer fortified with reinforcing pigments provide up to 50% greater wear.

EASY TO USE

Engineered for improved ease of use. Just add water, mix and apply.

PERFORMANCE ENGINEERED

Contains proper aggregate for playability and nonskid performance.

UNIFORM & NONFADING COLOR

Consistent quality control color matching at the factory assures uniform color, even on large projects. Pure inorganic pigments assure no fade or color change for years of service.



Mix Design (Based on 30 Gallons)

As supplied, PicklePlay is a highly concentrated material intended to be mixed with water to form a ready-to-use pavement resurfacer and finish coat. Per 30 gallon keg of PicklePlay, add 17 gallons of water.

WATER	YIELD
12 - 15 Gallons	47 Gallons

Application

Coverage rates can vary with the age, texture and porosity of the pavement to be sealed and with the method of application. New construction often requires resurfacer coats prior to color coating. On a smooth, sand textured surface, a properly mixed, ready-to-use material will cover at a rate of 12 to 15 square yards per gallon.

AVAILABLE IN 30-GALLON KEG

- #02551 - Dark Green
- #02552 - Tournament Green
- #02558 - Light Green
- #02555 - Sky Blue
- #02554 - Tournament Blue
- #02553 - Red
- #02550 - Gray
- #02557 - Purple
- #02556 - Beige

Mix Design (Based on 55 Gallons)

As supplied, Sport-Mat is a concentrate intended to be mixed with water to form a ready-to-use material. The mixture may consist of up to 20 gallons of water per 55 gallons of Sport-Mat concentrate to achieve workability.

WATER	YIELD
20 Gallons	75 Gallons

Application

Each application of the ready-to-use mixture shall be at a rate of 0.125 gallons per square yard per coat based on concentrate.

Coverage rates can vary with age, texture and porosity of the pavement to be sealed and with the method of application. A minimum of three coats is recommended to the minimum total deposition of 0.375 gallons of concentrate per square yard.

SPORT-MAT

Cushion Coating

Sport-Mat is a rubber filled, synthetic polymer emulsion, designed as a flexible and resilient recreational surface coating. Sport-Mat can be used to revitalize aging asphalt, asphalt-rubber, latex and urethane base mat running tracks. It is also used as a resilient all-weather surface on new running tracks. Sport-Mat offers the value of acrylic all-weather performance and the economy of a coating system.

PREMIUM CUSHION COATING SYSTEM

A tough, durable coating for running tracks.

SPECIALLY FORMULATED

100% compatible with asphalt, latex and urethane base mat track surfaces.

FAST DRYING BOND

Latex formula allows for faster drying than asphalt based coatings.

NO HARMFUL SOLVENTS

Can be used indoors as well as outdoors.

VERSATILE

Can be used on playgrounds, walkways or any surface where cushion and/or texture are desired.

AVAILABLE IN DRUM

- #02105 - Black 55-Gallon Steel Drum
- #02102 - Red 55-Gallon Steel Drum
- #02121 - Royal Blue 55-Gallon Steel Drum

AVAILABLE IN CUSTOM COLORS

DYNACUSHION BASE MAT

Acrylic Polymer Emulsion

Dynaflex DynaCushion offers three optional systems, including a three-layer *Standard*, five-layer *Pro*, and seven-layer *Elite* system - all available for the construction of athletic and recreational surfaces. All systems consist of an acrylic polymer emulsion DynaCushion Base layer that contains rubber particles, fabricated as a flexible and resilient cushion coating.

DynaCushion Base is designed as the base layer when installing the Dynaflex DynaCushion System for recreational surfaces. DynaCushion Base should be applied prior to DynaCushion Top, and DynaColor acrylic color coating should be applied as the final layer.

PREMIUM ACRYLIC CUSHION COATING

A flexible and resilient cushion base coating for recreational surfaces.

SPECIALLY FORMULATED

100% compatible with DynaColor acrylic color coating.

FAST DRYING

Acrylic formula allows for faster drying than asphalt-based coatings.

PLAYER COMFORT

Creates an energy absorbing court surface to increase comfort and reduce joint stress.

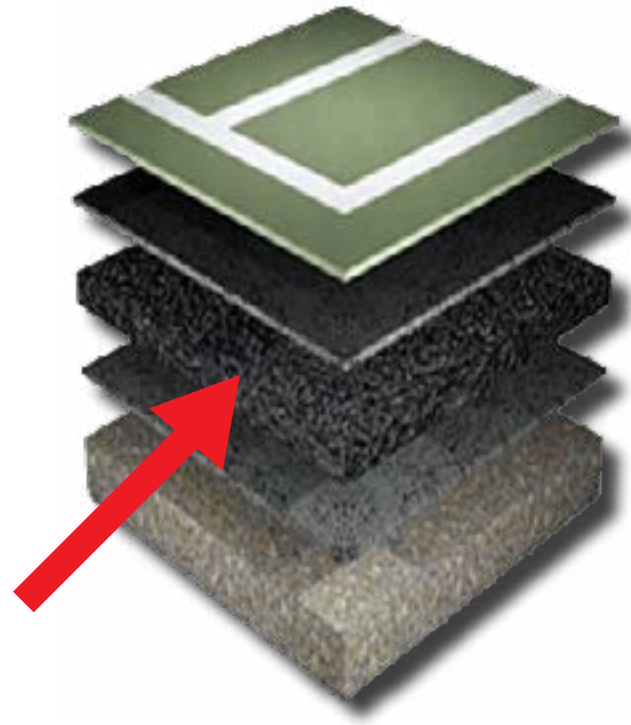
NO HARMFUL SOLVENTS

Can be used indoors as well as outdoors.

AVAILABLE IN PAIL OR DRUM

#02832 - 5-Gallon Pail

#02915 - 55-Gallon Steel Drum



Mix Design (Based on 55 Gallons)

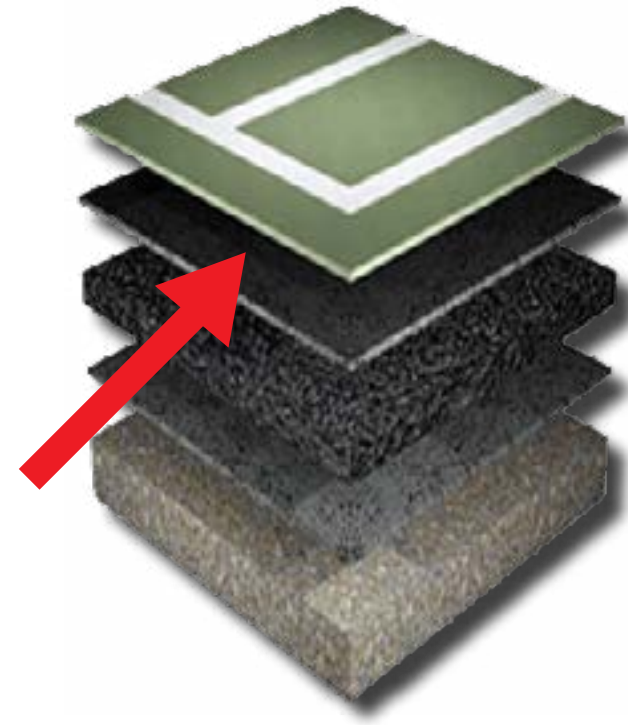
As supplied, DynaCushion Base is a concentrate intended to be mixed with water to form a ready-to-use material. The mixture may consist of up to 20 gallons of water per 55 gallons of DynaCushion Base concentrate to achieve workability.

WATER	YIELD
20 Gallons	75 Gallons

Application

Each application of the properly mixed, ready-to-use material will cover at a rate of 0.16 - 0.18 gallons per square yard per coat. Coverage rates can vary with age, texture and porosity of the pavement to be sealed and with the method of application. A minimum of three coats is recommended to the minimum total deposition of 0.375 gallons of concentrate/square yard.

Depending on the degree of cushioned effect desired, tennis courts require three or more coats of DynaCushion Base with one or two coats of DynaCushion Top.



Mix Design (Based on 55 Gallons)

As supplied, DynaCushion Top is a concentrate intended to be mixed with water to form a ready-to-use material. The mixture may consist of up to 20 gallons of water per 55 gallons of DynaCushion Top concentrate to achieve a heavy, creamy consistency.

WATER	YIELD
20 Gallons	75 Gallons

Application

Each application of the properly mixed, ready-to-use material will cover at a rate of 0.16 - 0.18 gallons per square yard per coat. Coverage rates can vary with the texture of the DynaCushion Base layer.

Application must be made when ambient and pavement temperatures are above 50°F. It is recommended that the area over which the application is made be open to use only after trial shows it to be cured sufficiently.

DYNACUSHION TOP MAT

Acrylic Polymer Emulsion

Dynaflex DynaCushion offers three optional systems, including a three-layer *Standard*, five-layer *Pro*, and seven-layer *Elite* system - all available for the construction of athletic and recreational surfaces. All systems consist of an acrylic polymer emulsion DynaCushion Top layer that contains fine rubber particles, designed as a leveling cushion inter-layer when installing the DynaCushion System for tennis courts and other recreational surfaces.

DynaCushion Base should be applied prior to DynaCushion Top. DynaCushion Top will level and fill textured surfaces resulting from the larger rubber granules in DynaCushion Base.

PREMIUM ACRYLIC CUSHION COATING

A flexible coating for recreational surfaces.

SPECIALLY FORMULATED

100% compatible with DynaColor acrylic color coating.

FAST DRYING

Acrylic formula allows for faster drying than asphalt-based coatings.

MULTI-LAYER

Designed as a cushion coat prior to application of DynaColor acrylic color coating finish.

NO HARMFUL SOLVENTS

Can be used indoors as well as outdoors.

AVAILABLE IN PAIL OR DRUM

#02820 - 5-Gallon Pail

#02830 - 55-Gallon Steel Drum

DYNABINDER

Patch Binder

Dynabinder is a high tensile strength, acrylic latex bonding agent. Dynabinder is formulated to patch new or existing asphalt and concrete surfaces. It can also be used as a primer for new or existing concrete surfaces.

Dynabinder is formulated to patch new or existing asphalt and concrete surfaces. It can also be used as a primer for new or existing concrete surfaces.

SAVES JOB TIME

Fast, permanent repair for low spots on tennis courts, play areas, walkways and outdoor basketball courts.

NON-SHRINKING

Even with 1" applications per lift, Dynabinder will stay leveled and not shrink.

FAST SETTING PATCHES

Will not pop out of asphalt.

EXCELLENT WATER-BASED PRIMER

Will adhere to concrete at least thirty days old.

AVAILABLE IN PAIL OR DRUM

#02510 - 5-Gallon Pail

#02509 - 55-Gallon Steel Drum



Mix Design

As supplied, Dynabinder is a concentrated material intended to be mixed with Portland cement and silica sand. Based on a 100 lb. bag of silica sand, mix one bag of sand with two gallons (dry, unpacked) Portland cement. Add to this dry mix up to three gallons of Dynabinder liquid in a portable cement mixer, wheelbarrow or other equipment which will thoroughly blend the components to a smooth homogeneous consistency. Do not add water. Extra Dynabinder should only be added after thoroughly mixing. Add only as much Dynabinder as is necessary to achieve workable consistency. Mix only as much as can be used within one hour.

DYNABINDER	CEMENT	SAND
1 - 1.5	1	2.5
2.5 - 3	2	5
5 - 6	4	10

Application

Properly mixed, Dynabinder, sand and cement will dry quickly. The following application procedures are recommended for best results: One gallon of Dynabinder will make 2.6 gallons of wet mix which is enough to fill 4.17 square feet by 1" deep. Calculate gallons of mix required by [area (ft.²) x depth (in.)] divided by 1.6 gallons of mix to fill. Coverage rates can vary with the age, texture and porosity of the pavement.



Basic Uses and Composition

CRA crack repair adhesive is specifically designed to work with Crack Repair Systems for superior bonding with existing asphalt or concrete surfaces and the Crack Repair System fabrics. CRA can also be used in the seaming of sport mat systems of all kinds and is also used with fiberglass mesh or fabric to encapsulate and solidify repaired areas.

CRA is a factory mixed high tensile strength, acrylic latex bonding agent and a premium quality non-pigmented acrylic emulsion. This product is also formulated with a surfactant package which promotes superior adhesion to both concrete and asphalt surfaces. CRA contains no asbestos or mercury.

Installation

CRA is intended to be used with commercially available crack repair systems for tennis courts. Refer to the instructions provided by the specific Crack Repair System manufacturer. CRA is ready-to-use. Stir contents and apply as directed by specific Crack Repair System instructions. Do not dilute.

CRA

Crack Repair Adhesive

CRA is a factory mixed, water-based acrylic product used as an adhesive for long-term crack repair and is approved for use with many popular Crack Repair Systems. CRA's versatility allows for multiple applications such as seaming on mat systems, encapsulating fiberglass mesh on repairs and primer applications

CRA is specifically designed to work with Crack Repair Systems for superior bonding with existing asphalt and concrete surfaces and Crack Repair System fabrics. With a precise blend of court patch binder and resurfacer, it eliminates the need for field mixing, resulting in a more accurate mix and time and labor savings.

FACTORY BLENDED

For precise and accurate mixes.

READY-TO-USE

Ready-to-use with no lost time due to field mixing.

SPECIFICALLY DESIGNED

For Crack Repair Systems.

SUPERIOR BONDING

Formulated to bond fabric to asphalt and concrete surfaces.

MULTIPLE APPLICATIONS

Can be used in mat seaming and repair applications.

VERSATILE

Can be used with fiberglass mesh to encapsulate and fortify court repairs.

AVAILABLE IN PAIL, KEG OR DRUM

#02352 - 5-Gallon Pail

#02355 - 30-Gallon Keg

#02350 - 55-Gallon Steel Drum

DYNAPRIME

Concrete Primer

DynaPrime concrete primer is a water-resistant pre-coat formulated with premium quality acrylic latex. The product is also formulated with a surfactant package which promotes superior adhesion to concrete surfaces.

DynaPrime concrete primer is recommended to promote superior bonding of acrylic resurfacer to concrete. DynaPrime concrete primer should only be used on concrete surfaces that have been acid or mechanically etched and have been power washed to remove surface contamination.

MAXIMUM ADHESION

Optimizes adhesion to etched concrete surfaces, creating an improved surface for acrylic resurfacers.

MAXIMUM PENETRATION

Formulated with sub-micron particle size latex to ensure penetration into concrete and oxidized asphalt surfaces.

READY-TO-USE

Formulation is ready-to-use, with no filler or water additions required.

EASY TO USE

DynaPrime concrete primer is tinted for ease of use.

FAST DRYING

Under optimum conditions.

AVAILABLE IN PAIL, KEG OR DRUM

#04127 - 5-Gallon Pail

#04137 - 30-Gallon Keg

#04135 - 55-Gallon Steel Drum



Mix Design

Stir thoroughly prior to use. DynaPrime concrete primer is ready-to-use. DO NOT dilute.

Application

For use on etched concrete surfaces, the following application procedures are recommended for best results:

	GALLONS/ SQ. YARD	GALLONS/ SQ. FOOT
DynaPrime	.022 - .034	.002 - .004

One gallon of DynaPrime concrete primer will cover 200 - 400 square feet depending on concrete finish and porosity of concrete. Multiply square yards of surface by .022 to determine number of gallons required.

Mix Design

Polyprime RPA is supplied in a ready-to-use form. No additional dilution is needed.

Application

For use over sound asphalt pavement. One gallon of Polyprime RPA will cover up to 300 square feet.

Coverage rates can vary with the application method and the age, texture and porosity of the pavement to be sealed. Avoid over or under application of the product. Polyprime RPA is formulated to be used in a continuous, thin film.

POLYPRIME RPA

Rust Preventative

Polyprime RPA is a ready-to-use, multi-polymer penetrating primer formulated to stop rust in pavements from penetrating the sealer or recreational coating. It provides all the benefits of Polyprime allowing greatly improved adhesion of the pavement surface.

Polyprime RPA will stop iron pyrite in pavement from forming rust spots on sealer and recreational coatings. As a primer, Polyprime RPA is an important part of a premium quality pavement sealing system.

BEAUTIFIES

Reduces rust spot bleed-through.

REDUCES STAINING

Reduces and, in some cases, eliminates active aggregate staining of asphalt covered with acrylic color coats.

MAXIMUM ADHESION

Optimizes adhesion of pavement sealer to oxidized asphalt pavements, creating a stronger surface that allows the pavement sealer to adhere properly.

MAXIMUM PENETRATION

Formulated with sub-micron particle sized polymers to insure deep penetration into oxidized surfaces.

ENHANCED SEALER SPREADABILITY

Polyprime RPA prevents rapid dehydration of sealer, enhancing spreadability.

RAPID DRYING

Polyprime RPA dries quickly; does not delay sealcoating.

REQUIRES NO ADDITIONAL WATER

Unlike most additives.

AVAILABLE IN PAIL

#06123 - 5-Gallon Pail

DYNACAULK

Crack Filler

Dynacaulk is an acrylic crack filler designed to fill small voids in concrete and asphalt surfaces. It has elastic properties and will adhere to the sides of a crack during pavement expansion and contraction. Dynacaulk has extraordinary elongation and memory and has been fortified with unique fibers so that, when cured, the resultant film performs as a non-woven fabric. This feature makes it especially well suited for treating small cracks on tennis courts and other recreational surfaces, typically less than 1/4" in width.

READY-TO-USE

BECOMES WATER RESISTANT QUICKLY

PROVIDES IDEAL BASE FOR DYNAFLEX SURFACING SYSTEMS

WATER CLEANUP

REMAINS ELASTIC

DURABLE

AVAILABLE IN PAIL

#01011 - 1-Gallon Pail



Mix Design

Use Dynacaulk as is. DO NOT dilute.

Application

- Clean crack so that it is free of all vegetation and debris. Remove all lost pavement from crack.
- Using a broad knife, squeegee rubber, or similar tool, fill crack to surface with Dynacaulk. It is important to exert some pressure when applying Dynacaulk into the void so that the material comes in contact with the walls of the crack.
- Allow the Dynacaulk to set. Four hours during ideal drying conditions - longer when damp or cool.
- Allow repair to dry, and then coat with Dynaflex color system of your choice.

NEYRA
Dynaflex
Sports Surfacing



Mix Design

Use full strength. DO NOT dilute.

Application

Fill crack with Acrylaseal. Squeegee any excess flush with pavement surface. Allow to dry. One gallon of Acrylaseal fills the following approximate lineal feet:

WIDTH	DEPTH		
	1/8"	1/4"	1/2"
1/8"	800	400	200
1/4"	400	200	100
1/2"	200	100	50



ACRYLASEAL

Crack Sealant

Acrylaseal is a cold applied, fuel resistant, high solids acrylic crack sealant. It is formulated to be fast setting and remain flexible over a wide range of temperatures. Recommended for asphalt and concrete surfaces. Acrylaseal provides a tough, resistant barrier against moisture for cracks up to 1/2" in width on asphalt and concrete pavements

READY-TO-USE

A convenient, fast and easy one-component system.

GOOD ADHESION

A penetrating surfactant formulation ensures bonding to the surface.

EXCELLENT RESILIENCE

A superior synthetic polymer compound provides elasticity. Contains no asphalt - will not track.

RUBBERIZED

Improves pliability in adverse weather conditions.

LESS SHRINKAGE

A high solids formulation prevents excessive shrinkage.

AVAILABLE IN JUG, CASE OR PAIL

#04101 - Black 1-Gallon Jug

#04101 - Black 1-Gallon Case*

#05506 - Black 5-Gallon Pail

#04102 - Gray 1-Gallon Jug

#04102 - Gray 1-Gallon Case*

#04103 - Gray 5-Gallon Pail

*Case includes four 1-Gallon jugs and has the same product number as a single jug. When ordering, please indicate the unit of measure needed.

DYNASTRIPE

Line Tape

Dynastripe is a premium textured acrylic line paint for tennis courts and other recreational surfaces. Formulated to be a fast drying, non-bleeding, long-lasting and sun bleach resistant paint, Dynastripe is unlike most solvent-based striping paints and will not etch the asphalt.

BETTER LINE EDGES

High solids, heavy bodied character minimizes creep under tape.

DURABLE

Dynastripe has been tested for thousands of hours in accelerated weather with no visible signs of fading, cracking, blistering or peeling.

LONG LASTING COLOR

Pure, inorganic, premium quality pigments resist sun and weather.

SAND TEXTURE FILLED

Designed to match tennis court finish.

AVAILABLE IN JUG OR PAIL

#04124 - 1-Gallon Jug White Textured

#04123 - 5-Gallon Pail White Textured

#04216 - 1-Gallon Jug White Non-Textured

#04128 - 5-Gallon Pail White Non-Textured

#04120 - 1-Gallon Jug Yellow Textured

#04136 - 1-Gallon Jug Yellow Non-Textured

#04121 - 5-Gallon Pail Yellow Textured

#04129 - 5-Gallon Pail Yellow Non-Textured

AVAILABLE IN CUSTOM COLORS



STRIPE AID

Line Striping Tape Gap Filler

Stripe Aid is an acrylic latex-based coating that always requires Dynastripe be applied as a top coat. Stripe Aid is used to seal the gap between a textured, colored pavement surface and the tape applied to the surface, assuring a straight line free of bleeding.

STOPS FUZZY EDGE

The sharpest, cleanest line possible, especially on textured, color coated surfaces.

NO SHOW

Non-pigmented and non-glossy. Won't show through when tape is removed.

EFFICIENT

Eliminates the need for painting tape with color coat.

FAST DRYING

Less time on the job.

AVAILABLE IN JUG OR CASE

#04125 - 1-Gallon Jug

#04125 - Case*

*Case includes four 1-Gallon jugs and has the same product number as a single jug. When ordering, please indicate the unit of measure needed.

Mix Design

Do not thin under normal conditions. Use clean, potable water if conditions require. Dynastripe white is formulated as a heavy-body paint to minimize creepage and to produce sharp edges when used with taped lines. For spray application, thin Dynastripe with up to 10% of potable water.

Application

For use over asphalt and concrete pavements, the following application procedures are recommended for best results:

Each application of the ready-to-use mixture shall cover approximately 640 feet of 2" wide line/gallon or 0.75 gallon for a standard doubles tennis court. Coverage rates can vary with age, texture and porosity of the pavement and with the method of application.

Mix Design

Do not thin under normal conditions. If necessary, thin with clean water at up to half pint per gallon. Over-thinning can result in insufficient solids to totally seal the tape edges.

Application

For use over asphalt and concrete pavements, the following application procedures are recommended for best results:

Optimum coverage is approximately 800 to 1,000 feet of line per gallon. A half gallon is normally sufficient for standard doubles tennis court. For rough surfaces, a second coat may be necessary.



DYNATRAC

Running Track Surface Binder

Dynatrac is a concentrated acrylic binder/pigment emulsion designed to be used with SBR and/or EPDM rubber granules. Dynatrac offers a superior formulation advantage in being 100% acrylic binder as compared with SBR latex binders, which are commonly used as upholstery adhesives and not designed to withstand the punishment of the sun and moisture.

ACRYLIC RESIN BASE

This advanced formulation provides exceptional adhesion and inherent flexibility.

HIGHLY RESISTANT

Dynatrac provides tough protection against the drying effects of the sun and damage caused by rain, snow and ice.

LONGER LASTING

The acrylic base is a tougher, more durable binder than the styrene-butadiene latex (SBR) commonly used.

CUSTOM COLORS

Dynatrac can be customized to your choice of track surface granule colors.

AVAILABLE IN DRUM

#02146 - 55-Gallon Steel Drum Neutral

#02164 - 55-Gallon Steel Drum Black



Mix Design (Based on 100 Gallons)

Dynatrac is a highly concentrated material intended to be mixed with water.

DYNATRAC	WATER	YIELD
100 Gallons	50 - 100 Gallons	150 - 200 Gallons

Application

For use over sound asphalt pavement, the following application procedures are recommended for best results:

	GALLONS/ SQ. YARD	GALLONS/ SQ. FOOT
Concentrate	.12	.013
Mix	.18 - .24	.02 - .027
Prime Coat	.05	.006

The per layer application rate will average 0.12 gallons per square yard of concentrate with the provision that the first prime coat and the last spray coat be Dynatrac. Each application of the properly mixed, ready-to-use material will cover at a rate of 0.18 - 0.24 gallons per square yard with the provision that the first prime coat and last spray coat be Dynatrac.

Under ideal weather conditions for drying (temperatures about 75°F, low humidity and full sun), allow a minimum of four hours between applications. For less ideal conditions, one coat per day may be the maximum application rate.



Mix Design (Based on 100 Gallons)

Dynathane is a highly concentrated material intended to be mixed with water.

DYNATHANE	WATER	YIELD
100 Gallons	50 - 100 Gallons	150 - 200 Gallons

Application

For use over sound asphalt pavement, the following application procedures are recommended for best results:

	GALLONS/ SQ. YARD	GALLONS/ SQ. FOOT
Concentrate	.12	.013
Mix	.18 - .24	.02 - .027
Prime Coat	.05	.006

The per layer application rate will average 0.12 gallons per square yard of concentrate with the provision that the first prime coat and last spray coat be Dynathane. Each application of the properly mixed, ready-to-use material will cover at a rate of 0.18 - 0.24 gallons per square yard with the provision that the first prime coat and last spray coat be Dynathane.

Under ideal weather conditions for drying (temperatures above 75°F, low humidity and full sun), allow a minimum of four hours between applications. For less than ideal conditions, one coat per day may be the maximum application rate.

DYNATHANE

Running Track Surface Binder

Dynathane is a concentrated urethane acrylic binder/pigment emulsion designed to be used with SBR and/or EPDM rubber granules. Dynathane offers an advanced formulation superior to 100% acrylic binders. It provides performance comparable to pure urethane solvent based systems. It can be used over existing urethane track surfaces and will not crack.

STOPS FADING & HARDENING

Pure mineral oxide pigments and the urethane copolymer provide superior resistance to moisture and the ultraviolet rays of the sun.

LONGER LASTING

The urethane acrylic base is a tougher, more durable binder than the carboxylated styrene-butadiene latex (SBR) commonly used.

HIGHLY RESILIENT

Dynathane provides high flexibility and elastic recovery resulting in fewer stress injuries.

URETHANE ACRYLIC RESIN BASE

This advanced formulation provides exceptional adhesion and inherent flexibility.

AVAILABLE IN DRUM

#02317 - 55-Gallon Steel Drum Neutral

#02319 - 55-Gallon Steel Drum Black

STEEL BROOM

Round carbon steel wire, staple set in a smooth sanded hardwood block with two tapered handle holes. Wide flare on ends allows close sweeping next to curbs. Compatible with tapered handle - Product #2060.

PRODUCT #	DESCRIPTION
0680	Steel Broom 16"



STREET BROOM

Heavy gauge orange plastic staple set in a smooth-sanded hardwood block. Durable long lasting plastic will outlast natural fiber. Wide flare on ends allows close sweeping next to curbs. Compatible with tapered handle - Product #2060.

PRODUCT #	DESCRIPTION
0740	Orange Poly Broom 18"



SMALL BRISTLE WIRE BROOM

Carbon steel wire broom, staple set in a smooth sanded hardwood block with one tapered and one threaded handle hole. Compatible with metal threaded handle - Product #2080 or tapered handle - Product #2060.

PRODUCT #	DESCRIPTION
0690	Bristle Broom 12"



METAL THREADED HANDLE

Selected straight-grain hardwood with clear lacquered finish. One end rounded and the other end is equipped with crimped-on metal thread.

PRODUCT #	DESCRIPTION
2080	Handle Metal Thread



TAPERED HANDLE

Made of No. 1 straight-grain hardwood smoothly sanded with one end rounded and the other end tapered.

PRODUCT #	DESCRIPTION
2070	Handle Tapered 8'
2060	Handle Tapered 6'
2055	Handle Tapered 5'
9070	Handle Tapered 4'



CRACK HOE WITH HANDLE

Use crack hoes to easily break up and dislodge particles, dirt and rocks from cracks prior to filling.

PRODUCT #	DESCRIPTION
3050	Crack Hoe with Handle



LITTLE WONDER BLOWER

Little wonder is one of the highest performing blowers on the market. An advanced impeller design, coupled with an aerodynamically constructed housing and curved air inlet creates maximum air flow and horsepower. It utilizes a very strong and reliable Honda engine with rear tires that make it a breeze pushing on the parking lot.

PRODUCT #	DESCRIPTION
4530	9HP Blower



WIRE WHEEL REFILL

The Little Wonder Crack Cleaner is perfect for preparing surface cracks for sealing and expansion joints for recaulking. Heavy-duty twisted wire brush on a 9" disc.

PRODUCT #	DESCRIPTION
3035	Wire Wheel Refill



POUR POT

Pour pot is made of 20-gauge steel, stronger construction, yet the total weight of pot is lighter. Adjustable three size pouring nozzle and on-drip finger-tip control valve. All welded construction can be burned clean repeatedly. Features leg stand that eliminates material spillage when pot is not in use. Capacity: Three gallons.

PRODUCT #	DESCRIPTION
3090	Pour Pot
7739	Pour Pot with Wheels
1029	Pour Pot 4-Gallon Bander



MELTER 10-GALLON

This 10-gallon melter/applicator is the fastest and most efficient method for the application of hot applied crack sealants. It can also apply materials from stationary kettles or any large melter. It is mounted on steel wheels and comes equipped with a spring loaded, hand-controlled release valve, hand agitator, steel screed for striking off the sealant in uniform width, burner assembly with hose, regulator, temperature gauge and a platform for propane bottles.

PRODUCT #	DESCRIPTION
3100	Melter 10-Gallon
3105	Torches
7392	Rear Wheel
4852	4-Inch Front Swivel Wheel



RYNOWORX 10-GALLON MELTER

The RY10MA-Elite is the newest and most advanced melter-applicator available today. Built upon proven technology from earlier versions of the RY10MA-PRO with many added features, including RynoValve™, RynoDash™, Adjustable Controls as well as dozens of Major General Enhancements.

PRODUCT #	DESCRIPTION
9472	RynoWorx 10-Gallon Melter



MELTER 30-GALLON

This 30-gallon melter is a crack sealing machine used for hot rubber crack sealing, including large parking lot jobs or any joint sealing project. Efficient with a quick start up time, this direct fire unit is ready to work in minutes by just adding a 20 lb propane tank. Melter is extremely durable with a long handle faucet valve that can handle the torch for cleanup.

PRODUCT #	DESCRIPTION
9300	Melter 30-Gallon



AQUAPHALT

Aquaphalt is the first pre-mixed, permanent repair material that is enduring, high-performing and 100% environmentally friendly. Aquaphalt's proprietary "green" binder reacts and hardens with water - unlike other asphalt patching products available on the market today containing toxic petroleum-based solvents with volatile organic compounds. Aquaphalt can be laid directly from its container, so no repeat repairs or overhead costs are required.

PRODUCT #	DESCRIPTION
5715	Aquaphalt 6.0
5716	Aquaphalt 4.0



MEASURING WHEEL

Professional grade measuring wheel for easy and accurate short or long distance measuring. Durable construction with a four-foot circumference spoked wheel. Quick folding mechanism for transportation and storage at one half its size.

PRODUCT #	DESCRIPTION
1050	1' Measuring Wheel
8770	3' Measuring Wheel



ASPHALT TAMP

Designed for tamping hot mix asphalt, gravel and dirt. Tamp base has well rounded edges to eliminate marking. Size 6" x 8". Lightweight: 8 lbs.

PRODUCT #	DESCRIPTION
3005	Asphalt Tamp STL 8" x 8"



ASPHALT LUTE

The 36" blade handle is made of light weight magnesium. The slightly smaller handle diameter allows hands to relax more while working and also allows a heavier wall thickness to resist bending, without increasing the weight of the lute. Heads are made of wear-resistant aluminum alloy. The 1/8" thick tee-beam has blunt pointed teeth with a notch, permitting mix to flow through easily without "gumming up." The smooth edge is used for final finishing, leaving asphalt ready for compaction.

PRODUCT #	DESCRIPTION
3000	36" Asphalt Lute
3013	30" Asphalt Lute
3012	24" Asphalt Lute
7833	30" Wood Handle Lute



WOOD SEALCOAT BRUSH

Bristles are staple set in a smooth hardwood block with one threaded handle hole. Filling material is not affected by sealants or petroleum products. These brushes are designed for the professional sealant and blacktop material provider. Compatible with metal threaded handle - Product #2080.

PRODUCT #	DESCRIPTION
0510	36" Brush
0515	24" Brush



EDGING/TRIM BRUSH HEAD

Filling material is staple set in a smooth, sanded, wax tumbled hardwood block with a standard tapered handle hole. Ideal sealer brush for edging around curbs, light poles, concrete, parking blocks, etc. Compatible with tapered handle - Product #2060.

PRODUCT #	DESCRIPTION
0630	Brush Trim Head Tapered
0631	Brush Trim Head Threaded



POWER BRUSH

The sealcoating power brush is the preferred applicator tool for applying sealcoat. It applies a uniform coat of sealant with a single coat of application. The sealcoating power brush comes in 24", 36" and 48".

PRODUCT #	DESCRIPTION
2090	Power Brush Handle 6'
2110	Power Brush Holder 6.5"
0550	Power Brush Refill 24"
0560	Power Brush Refill 36"
0570	Power Brush Refill 48"

SQUEEGEE

Engineered with the highest quality, lightweight, extruded aluminum/magnesium alloys, and Neoprene rubber blends to produce maximum performance under all conditions and applications. Compatible with tapered handle - Product #2060.

PRODUCT #	DESCRIPTION
4050	24" Squeegee
4000	24" Rubber Replacement
4060	36" Squeegee
4010	36" Rubber Replacement

GUM RUBBER SQUEEGEE

The tan gum slanted edge blade offers greater flexibility when working with water based or latex sealing material. Non-serrated squeegee performs like no other in the industry. Great for the contractor that hates Chatter and squeegee marks. Three sizes available for all application needs.

PRODUCT #	DESCRIPTION
1903	24" Squeegee
1904	30" Squeegee
1905	36" Squeegee



V-SQUEEGEE

This is one of our most popular squeegees. Its unique V-shaped design makes it ideal for filling cracks. You can "push" or "pull" your material into the crack in order to complete the repair. This squeegee comes complete with a 6' handle and neoprene blade.

PRODUCT #	DESCRIPTION
4110	Squeegee V Replacement (Red)
7906	Squeegee V with Handle Hot (Red)
4090	Squeegee V with Handle Cold (Black)
4100	Squeegee Replacement Cold (Black)



TENNIS SQUEEGEE

Tennis court surfacing tool that professional surfacing technicians use to apply tennis court coatings. Designed with a soft, thick rubber blade to lay down the perfect film thickness. 7' Handle.

PRODUCT #	DESCRIPTION
4040	Tennis Squeegee Complete 24"
4066	Tennis Squeegee Complete 36"
7563	Tennis Squeegee Complete 48"



TENNIS MATERIAL MIXER

Long Shaft Junior Mud Mixer rounded end design for better balance when mixing. Extra long shaft for mixing in large containers.

PRODUCT #	DESCRIPTION
7588	Mud Mixer



NOZZLE 1/4" THREAD

A variety of carbon hardened steel nozzle sizes, from the smallest spray width, 80/20, to the widest, 80/70.

PRODUCT #	DESCRIPTION
8020	Nozzle 80/20
8030	Nozzle 80/30
8040	Nozzle 80/40
8050	Nozzle 80/50
8060	Nozzle 80/60
8070	Nozzle 80/70

Ceramic tips available in 80/50 and 80/70.

NOZZLE 3/8" THREAD

A 3/8" carbon hardened steel nozzle in three sizes: 80/40, 80/50 and 80/70.

PRODUCT #	DESCRIPTION
8056	Nozzle 80/50
8075	Nozzle 80/70
8280	Nozzle 80/40

SPRAY HOSE

Our high-quality 3/4" spray hose comes in three different lengths: 50', 75' and 100'. We use the most durable rubber hoses rated for 150 PSI.

PRODUCT #	DESCRIPTION
5530	Spray Hose 50'
5560	Spray Hose 75'
5510	Spray Hose 100'



SPRAY WAND

Our five-foot light weight spray wand makes your job easier. It comes with a 3/4" steel ball valve for longer lasting use. This device makes sealcoating large areas faster and easier and provides the most control for the professional spray applicator.

PRODUCT #	DESCRIPTION
5570	Spray Wand Complete

BALL VALVE 3/4"

The 3/4" full-port ball valve is good for your spray hose and sealcoat spray wand.

PRODUCT #	DESCRIPTION
5020	Ball Valve Brass 3/4"
5030	Ball Valve Hardened 3/4"

TITAN LINE STRIPER

Titan's gas-powered, sealed hydraulic line striper offers a lifetime of durability. This line of stripers delivers a perfect line on difficult applications like smooth concrete and is also great for field and pavement marking.

PRODUCT #	DESCRIPTION
8414	Line Striper



ASPHALT SHOES

These asphalt shoes allow workers to walk on warm material without leaving tracks. These shoes allow you to tamp and compact where power and hand rollers can't reach. You can also walk on asphalt in comfort without compromising the finished surface. These shoes are made with heavy gauge galvanized steel and a durable custom-blended extra-thick felt sole for long wear and clean, neat foot compaction. A non-hassle quick release strap system allows quick in-and-out use. These shoes feature a steel foot bed and heel frame for added stability. One size fits most.

PRODUCT #	DESCRIPTION
7601	Asphalt Shoe Felt
7709	Asphalt Shoe Wood



LEATHER GLOVES

Double leather palm gloves with long safety cuffs provide you with excellent protection in harsh working environments.

PRODUCT #	DESCRIPTION
1570	Leather Gloves



SAFETY GLASSES

Protect your eyes from injury with our safety glasses that come in clear or smoked lenses.

PRODUCT #	DESCRIPTION
1685	Safety Glasses - Clear



SPRAY HOOD

All-cotton sock that protects the sensitive skin of the face while allowing airflow to keep cool.

PRODUCT #	DESCRIPTION
1660	Safety Spray Hood



CAUTION TAPE

Prevents accidents by increasing visibility of hazards with non-adhesive barricade tape. Caution tape is lightweight and economical. Made of a polyethylene material with a three mm thickness.

PRODUCT #	DESCRIPTION
1010	Caution Tape



FLAGGING TAPE

Highly visible flagging tape made from extruded P.V.C., which is preferred by professional tradesmen, surveyors and sportsmen. With our bright orange fluorescent tape, you will be able to show traffic the certain areas marked off so your sealcoat job can dry.

PRODUCT #	DESCRIPTION
1030	Orange Flagging Tape



LARGE HANDICAP SYMBOL

Stencil is made of heavy duty plastic to withstand daily use by pavement marking professionals. Easy maintenance, virtually no build-up due to smooth non-stick surface. When paint dries, just flex and peel paint away.

PRODUCT #	DESCRIPTION
2550	Handicap Symbol 39"



PITCH GEL

Our pitch gel protects the skin from irritation and pitch burns. Pitch gel is a barrier to fiberglass, asphalts, plasticizers, polyester resins, chlorinated and keton-type solvents, phenolic resins, epoxy resins, rubber accelerators, rubber adhesives, vegetable oil products and transformer oils. Use of gloves and other protection should still be used.

PRODUCT #	DESCRIPTION
1640	Pitch Gel



OIL FLO

Oil Flo Safety Solvent Cleaner is a specialized product for removing organic stains such as asphalt, tar, coal, grease and oil. Oil Flo is biodegradable, water soluble and contains no harmful ingredients or chlorinated fluorocarbons.

PRODUCT #	DESCRIPTION
1630	Oil Flo - 1-Gallon



WET HAND TOWELS

Clean EMS pre-moistened, non-abrasive disinfectant towels offer a convenient, portable, and waterless system for disinfection and light-duty cleaning of hard surfaces.

PRODUCT #	DESCRIPTION
1530	Wet Hand Towels



CHERRY PUNCH HAND CLEANER

Cherry Punch hand cleaner has a pleasant cherry scent and is enriched with emollients to leave the hands feeling great even after repeated washings. It is made with mild, low-odor solvents to produce clean, fresh smelling hands. Cherry Punch quickly and easily rinses clean from hands and is also phosphate-free.

PRODUCT #	DESCRIPTION
1535	Hand Cleaner Cherry Bomb - Quart



CITRUS KING CHERRY BOMB

Cherry Bomb tar tack and sealcoat remover is a highly advanced formula used for dissolving asphalt, asphalt rubber, bitumen, coal tar, crude oil, cutback, crack filler, emulsions, mastic, oil stains from concrete, road oil, seal coat, tack oil, tar, wet patch roof cement, and much more.

PRODUCT #	DESCRIPTION
1528	Citrus King - Pint



38A

38A is a heavy duty hand cleaner designed for cleaning hands of sealcoat, asphalt, tar, oil, mastic, adhesive, pitch, grease and other tough materials. Cleans instantly and removes all stains from creases and finger nails.

PRODUCT #	DESCRIPTION
1520	38A Hand Cleaner - Pint



NEYRA
SUPERIOR PAVEMENT PRODUCTS
AND SURFACING SOLUTIONS

 800.543.7077  www.neyra.com
 customerservice@neyra.com
  